

Famitsu Marketing Data Service

Data Collected by Famitsu: from August 6 to August 12, 2007

Software Sales Ranking: TOP 30

Hardware Sales/Share

Hardware Sales: Comparison of Weekly Sales with Previous Year's

Software Sales/Share for Each Platform

Market Size: Comparison of Scale Transition with Previous Year's

Software Sales Ranking: TOP 30

Note 1: Based on two different data, quantity of stock numbers may have a margin of error.

Note 2: In addition to game shops, titles listed in colored lines are also available at five convenience-store c K = 1000

This Week	Last Week	Week Before Last	Platform	Title	Publisher	Sales Date	Price (incl. tax)	Genre	Copies Sold/wk (Estimated)	Copies Shipped (Estimated)	Cumulative Copies Sold (Estimated)	Sales-Stock Ratio	Copies in Stock
1	NEW	-	DS	SD Gundam G Generation: Cross Drive	NAMCO BANDAI Games	08-09-07	¥5,040	Sim	126,694	236,655	126,694	53.5%	110K
2	1	1	Wii	Mario Party 8	Nintendo	07-26-07	¥5,800	Board/Act	114,445	617,250	543,918	88.1%	69.8-73.3K
3	NEW	-	PS2	Final Fantasy XII International Zodiac Job System	SQUARE ENIX	08-09-07	¥6,800	RPG	49,528	151,280	49,528	32.7%	101.8K
4	2	-	PS2	J-League Winning Eleven 2007: Club Championship	KONAMI	08-02-07	¥7,329	Act	46,255	220,395	182,785	82.9%	29.7-37.6K
5	NEW	-	DS	Donkey Kong: Jungle Climber DK Jungle Climber	Nintendo	08-09-07	¥4,800	Act	38,229	134,857	38,229	28.3%	96.6K
6	5	11	Wii	Wii Sports	Nintendo	12-02-06	¥4,800	Act	32,908	1,907,475	1,873,887	98.2%	33.6-38K
7	NEW	-	PSP	Wild Arms: Crossfire	SCEJ (SONY)	08-09-07	¥4,980	Sim/RPG	28,508	51,329	28,508	55.5%	22.8K
8	3	2	PS3	Minna no Golf 5 Hot Shots Golf	SCEJ (SONY)	07-26-07	¥5,980	Act	27,302	379,306	246,322	64.9%	55-133K
9	7	12	Wii	Hajimete no Wii Wii Play	Nintendo	12-02-06	¥4,800	Other	25,589	1,493,765	1,453,796	97.3%	40-40.9K
10	NEW	-	DS	Wantame Uranai Channel	CAPCOM	08-09-07	¥3,990	Other	23,502	35,912	23,502	65.4%	12.4K
11	4	4	DS	Subarashiki Kono Sekai	SQUARE ENIX	07-27-07	¥5,980	Act/RPG	22,919	200,333	145,171	72.5%	19.6-55.2K
12	10	16	DS	New Super Mario Bros.	Nintendo	05-25-06	¥4,800	Act	21,566	4,755,269	4,723,622	99.3%	31.6-48.1K
13	9	10	DS	Zelda no Densetsu: Mugen no Sunadokei The Legend of Zelda: Phantom Hourglass	Nintendo	06-23-07	¥4,800	Act/RPG	20,698	750,636	722,239	96.2%	28.4-42.4K
14	11	17	DS	Tohoku Daigaku Mirai-Kagaku-Gijutsu-Kyodo-Kenkyu-Center Kawashima Ryuta Kyoju Kanshu: Motto Nou wo Kitaeru Otona no DS Training Brain Age 2: More Training in Minutes a Day	Nintendo	12-29-05	¥2,800	Other	20,541	4,622,450	4,587,290	99.2%	35.2-44.2K

15	13	22	DS	Mario Kart DS	Nintendo	12-08-05	¥4,800	Act	18,958	2,369,790	2,353,940	99.3%	14.9-15.9K
16	14	24	DS	Oide yo Dobutsu no Mori Animal Crossing: Wild World	Nintendo	11-23-05	¥4,800	Other	17,775	4,298,937	4,284,624	99.7%	14.3-18.6K
17	6	5	PS2	Jikkyo Powerful Pro Yakyu 14	KONAMI	07-19-07	¥7,329	Act/Sim	17,765	278,024	243,922	87.7%	28.2-34.1K
18	16	21	DS	Itadaki Street DS	SQUARE ENIX	06-21-07	¥5,040	Board	16,926	358,029	321,818	89.9%	26.9-36.2K
19	19	15	DS	Miru Chikara wo Jissen de Kitaeru: DS Mejikara Training Flash Focus: Vision Training in Minutes a Day	Nintendo	05-31-07	¥3,800	Other	16,665	533,707	503,758	94.4%	22.9-29.9K
20	-	-	DS	Ganbaru Watashi no Kakei Diary	Nintendo	07-12-07	¥3,800	Other	16,144	149,490	93,465	62.5%	55.8-56K
21	18	19	DS	Eigo ga Nigate na Otona no DS Training Motto Eigo-zuke	Nintendo	03-29-07	¥3,800	Other	15,794	489,794	469,867	95.9%	19.9-22.3K
22	24	27	DS	Tohoku Daigaku Mirai-Kagaku-Gijutsu-Kyodo-Kenkyu-Center Kawashima Ryuta Kyoju Kanshu: Nou wo Kitaeru Otona no DS Training Brain Age: Train Your Brain in Minutes a Day	Nintendo	05-19-05	¥2,800	Other	14,404	3,489,278	3,468,067	99.4%	21.2-23.8K
23	12	9	Wii	Dragon Quest Sword: Kamen no Joo to Kagami no Tou Dragon Quest Swords: The Masked Queen and the Tower of Mirrors	SQUARE ENIX	07-12-07	¥6,800	Act/RPG	14,002	478,142	434,265	90.8%	43.9-49.5K
24	15	8	PSP	Grand Theft Auto: Liberty City Stories	CAPCOM	07-26-07	¥5,229	Act	11,987	101,092	68,801	68.1%	23.7-32.3K
25	22	28	DS	Eigo ga Nigate na Otona no DS Training Eigo-zuke	Nintendo	01-26-06	¥3,800	Other	11,883	1,965,517	1,943,997	98.9%	21.5-25.5K
26	8	-	DS	Facening de Hyoyo Yutaka ni Insho Up: Otona no DS Kao Training	Nintendo	08-02-07	¥4,800	Other	11,806	104,270	34,332	32.9%	33.7-69.9K
27	23	26	DS	Naruto: Shippu-den Saikyo Ninja Daikesshu 5 Kessen! "Akatsuki"	TAKARATOMY	07-19-07	¥5,040	Act	10,653	94,776	65,124	68.7%	20.4-29.7K
28	26	-	PSP	Monster Hunter Portable 2nd Monster Hunter Freedom 2	CAPCOM	02-22-07	¥5,229	Act	9,445	1,308,139	1,274,825	97.5%	19.1-33.3K
29	27	29	DS	Pocket Monster Diamond/Pearl	Pokemon	09-28-06	¥4,800	RPG	9,128	5,334,860	5,273,708	98.9%	1.2-113.5K
30	-	-	DS	Sakasete! Chibi-Robo! Chibi-Robo: Park Patrol	Nintendo	07-05-07	¥4,800	Act/Adv	8,662	143,390	125,079	87.2%	18.3-24.4K

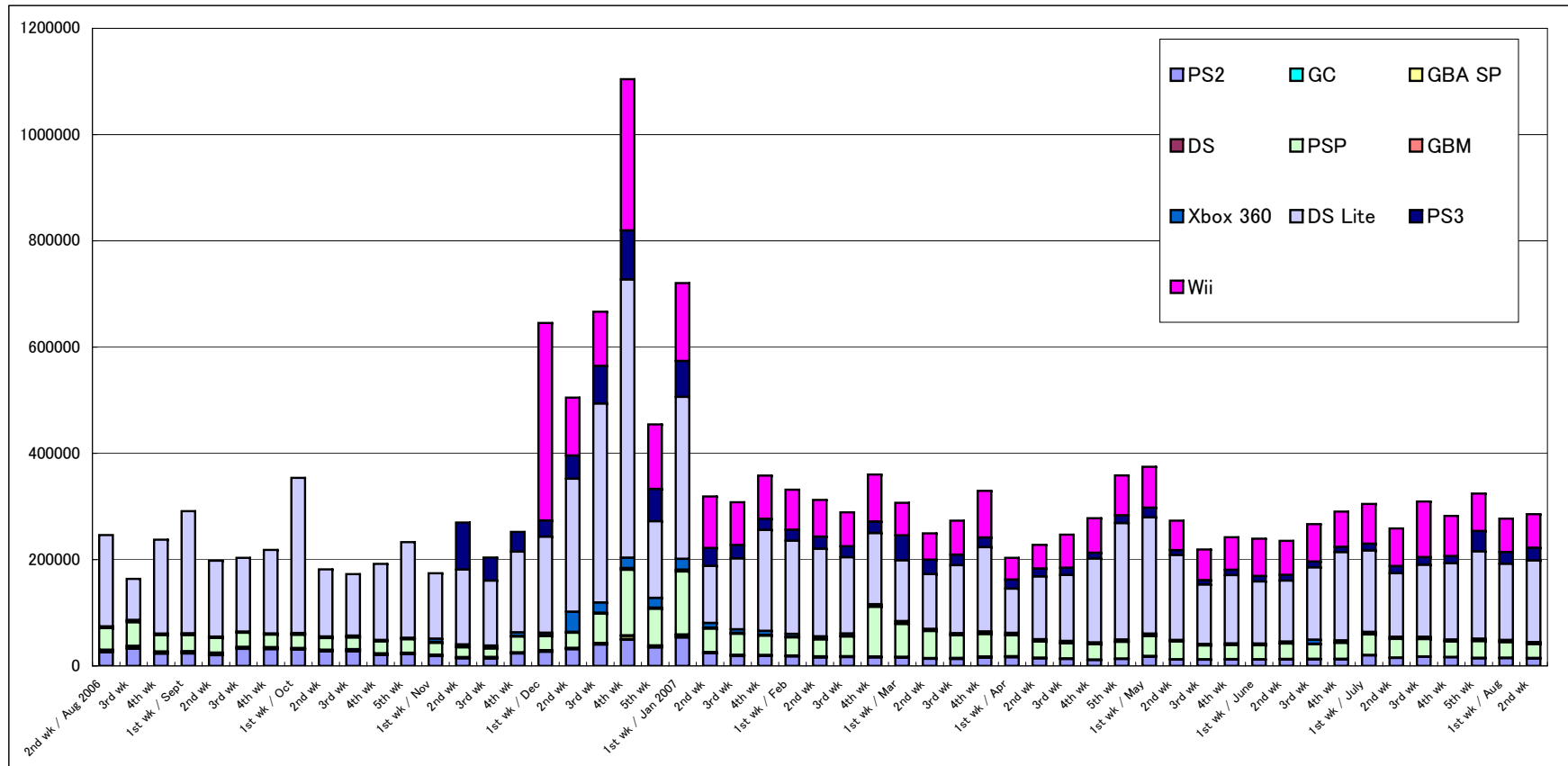
Other New Titles

Platform	Title	Publisher	Sales Date	Price (incl. tax)	Genre	Copies Sold/wk (Estimated)	Sales-Stock Ratio	Copies Shipped (Estimated)	Copies in Stock
PS2	Hisui no Shizuku: Hiiro no Kakeru 2	IDEA FACTORY	08-09-07	¥7,140	Adv	8,251	69.1%	11,944	3.7K
DS	Yu-Gi-Oh! Duel Monsters GX Card Almanac	KONAMI	08-09-07	¥2,625	Other	5,843	21.0%	27,785	21.9K
DS	Itsuwari no Rondo	SUCCESS	08-09-07	¥5,040	Sim/RPG	3,729	54.0%	6,906	3.2K
PS2	Castle Fantasia: Arihato Senki	GN Software	08-09-07	¥7,140	Sim/RPG	3,256	62.8%	5,188	1.9K
PS2	xxxHolic: Watanuki no Izayoi Sowa	Marvelous Entertainment	08-09-07	¥7,140	Adv	3,236	29.5%	10,986	7.8K
PS2	Simple 2000 Series Vol. 119: The Survival Game 2	D3 PUBLISHER	08-09-07	¥2,100	Act/Sht	3,018	35.0%	8,615	5.6K
DS	New Eitango Target 1900 DS	IE Institute	08-09-07	¥3,990	Other	2,876	10.8%	26,652	23.8K
DS	1500 DS Spirits Vol. 1: Majong	tasuke	08-09-07	¥1,575	Table	2,368	25.9%	9,151	6.8K
DS	Machi no Pet-ya-san DS: 200-piki Wan-chan Daishugo	e frontier	08-09-07	¥5,040	Sim	2,031	22.1%	9,196	7.2K
DS	Simple DS Series Vol. 20: The Senkan	D3 PUBLISHER	08-09-07	¥2,800	Sht	1,890	17.9%	10,579	8.7K
DS	1500 DS Spirits Vol. 2: Shogi	tasuke	08-09-07	¥1,575	Table	1,754	21.3%	8,224	6.5K
DS	1500 DS Spirits Vol. 5: Hanafuda	tasuke	08-09-07	¥1,575	Table	1,667	26.9%	6,194	4.5K
DS	Eijukugo Target 1000 DS	IE Institute	08-09-07	¥3,990	Other	1,148	5.4%	21,307	20.2K
PSP	Tales of Phantasia: Full Voice Edition [PSP the Best]	NAMCO BANDAI Games	08-09-07	¥2,800	RPG	1,122	27.0%	4,148	3.K

DS	1500 DS Spirits Vol. 3: Block Kuzushi	tasuke	08-09-07	¥1,575	Act	1,087	17.0%	6,412	5.3K
DS	Tohai Densetsu "Akagi": Yami ni Maiorita Tensai	CultureBrain	08-09-07	¥5,800	Table	879	20.7%	4,242	3.4K
PS2	Tennis no Ouji-sama: DokiDoki Survival - Sanroku no Mystic [Konami the Best]	KONAMI	08-09-07	¥2,940	Adv	740	32.7%	2,262	1.5K
PSP	Minna no Chizu 2 Chiiki-ban: Higashi-Nihon-hen	ZENRIN	08-09-07	¥5,040	Other	731	19.1%	3,830	3.1K
DS	1500 DS Spirits Vol. 4: Reversi	tasuke	08-09-07	¥1,575	Table	619	10.4%	5,944	5.3K
PS2	Tennis no Ouji-sama: DokiDoki Survival Umibe no Secret [Konami the Best]	KONAMI	08-09-07	¥2,940	Adv	462	20.6%	2,238	1.8K
PS2	Gift: Prism (Sweets So Sweet)	Sweets	08-09-07	¥2,940	Adv	446	33.4%	1,337	0.9K
DS	Minagara Oreru DS Origami	TDK CORE	08-09-07	¥3,990	Other	376	11.2%	3,353	3.K
PSP	Minna no Chizu 2 Chiiki-ban: Nishi-Nihon-hen	ZENRIN	08-09-07	¥5,040	Other	338	26.4%	1,280	0.9K
PSP	Boxer's Road 2: The Real [Ertain Best]	ERTAIN	08-09-07	¥2,940	Act/Sim	312	16.1%	1,938	1.6K
PSP	Minna no Chizu 2 Chiiki-ban: Naka-Nihon-hen	ZENRIN	08-09-07	¥5,040	Other	312	25.5%	1,222	0.9K
DS	Bokura no Taiyo: Django and Sabata [Konami the Best] Lunar Knights	KONAMI	08-09-07	¥2,940	Act/RPG	306	23.2%	1,320	1.K
PSP	Shogi ga Tsuyokunaru Gekisashi Joseki Dojo	Mainichi Communications	08-09-07	¥5,040	Table	180	6.6%	2,725	2.5K
DS	It's Tehodoki: Hannya-Shingyo Nyumon	ASNetworks	08-09-07	¥3,990	Other	111	9.5%	1,167	1.1K

Hardware Sales/Share

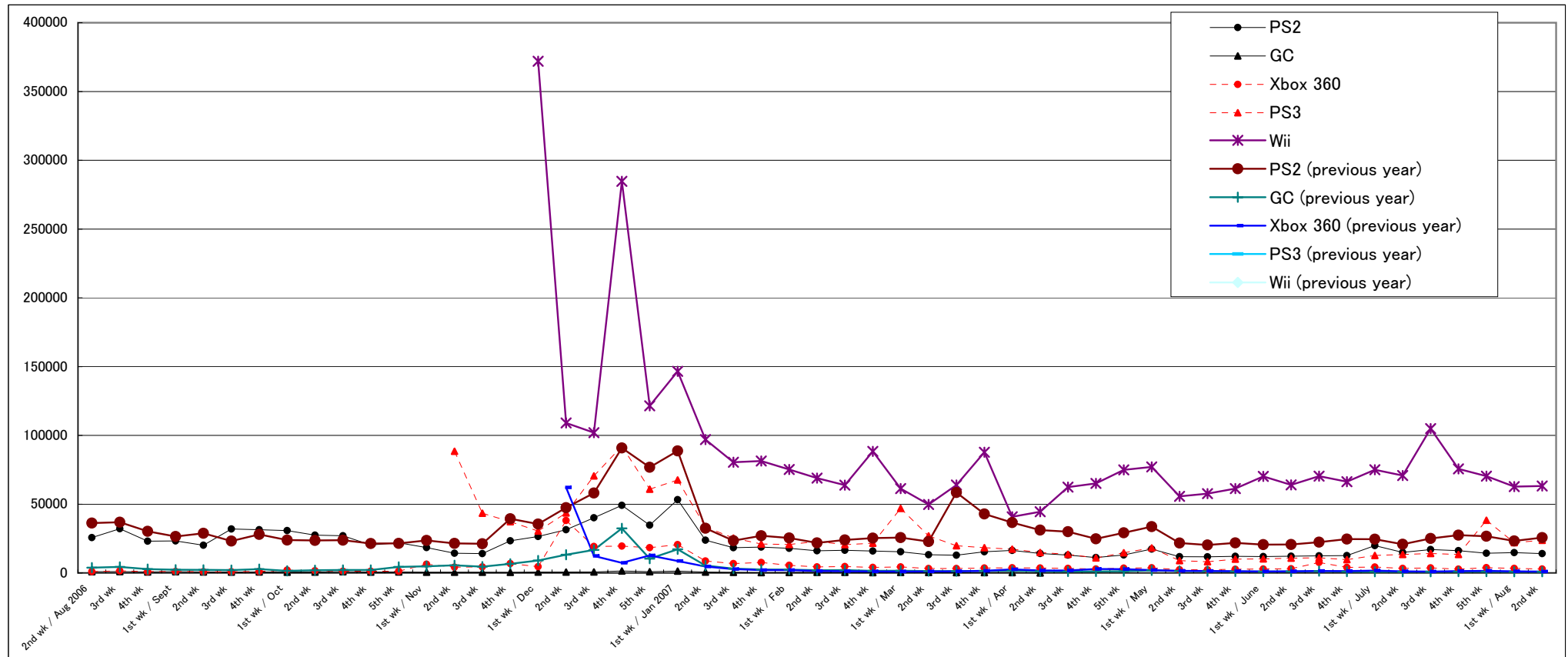
	6/18-6/24		6/25-7/1		7/2-7/8		7/9-7/15		7/16-7/22		7/23-7/29		7/30-8/5		8/6-8/12		2007 to Date
	Units Sold	Share	Units Sold	Share	Units Sold	Share	Units Sold	Share	Units Sold	Share	Units Sold	Share	Units Sold	Share	Units Sold	Share	
PS2	12,602	4.3%	19,859	6.5%	14,956	5.8%	17,041	5.5%	16,233	5.8%	14,339	4.4%	14,762	5.3%	14,064	4.9%	518,726
GC																	5,710
GBA SP	426	0.1%	513	0.2%	476	0.2%	388	0.1%	571	0.2%	606	0.2%	464	0.2%	580	0.2%	25,762
DS	186	0.1%	239	0.1%	188	0.1%	155	0.1%	128	0.0%	128	0.0%	105	0.0%	138	0.0%	12,195
PSP	30,203	10.4%	38,609	12.7%	35,181	13.6%	32,935	10.6%	29,268	10.4%	31,669	9.8%	29,492	10.6%	26,487	9.3%	1,252,303
GBM	455	0.2%	525	0.2%	658	0.3%	539	0.2%	656	0.2%	616	0.2%	692	0.2%	611	0.2%	28,049
Xbox 360	4,058	1.4%	4,318	1.4%	3,355	1.3%	3,640	1.2%	2,772	1.0%	3,885	1.2%	3,305	1.2%	2,826	1.0%	146,666
DS Lite	166,362	57.3%	153,120	50.2%	119,636	46.3%	135,791	43.9%	143,491	50.8%	164,353	50.7%	143,551	51.8%	153,845	53.9%	4,727,854
PS3	9,665	3.3%	12,677	4.2%	13,402	5.2%	14,143	4.6%	13,443	4.8%	38,322	11.8%	21,985	7.9%	23,705	8.3%	641,231
Wii	66,357	22.9%	75,010	24.6%	70,798	27.4%	104,897	33.9%	75,681	26.8%	70,366	21.7%	62,798	22.7%	63,238	22.2%	2,297,793
Total	290,314	100.0%	304,870	100.0%	258,650	100.0%	309,529	100.0%	282,243	100.0%	324,284	100.0%	277,154	100.0%	285,494	100.0%	



Comparison of Weekly Sales of PS2, GC, Xbox 360, PS3, and Wii

Units Sold	5th wk	1st wk / May	2nd wk	3rd wk	4th wk	1st wk / June	2nd wk	3rd wk	4th wk	1st wk / July	2nd wk	3rd wk	4th wk	5th wk	1st wk / Aug	2nd wk
PS2	13,040	17,333	11,854	11,749	12,113	11,916	12,180	12,406	12,602	19,859	14,956	17,041	16,233	14,339	14,762	14,064
GC																
Xbox 360	3,530	3,753	2,369	2,296	2,664	2,873	3,031	7,654	4,058	4,318	3,355	3,640	2,772	3,885	3,305	2,826
PS3	14,700	18,186	8,962	8,189	9,984	10,195	10,756	11,012	9,665	12,677	13,402	14,143	13,443	38,322	21,985	23,705
Wii	74,950	77,077	55,724	57,654	61,339	70,222	64,039	70,356	66,357	75,010	70,798	104,897	75,681	70,366	62,798	63,238

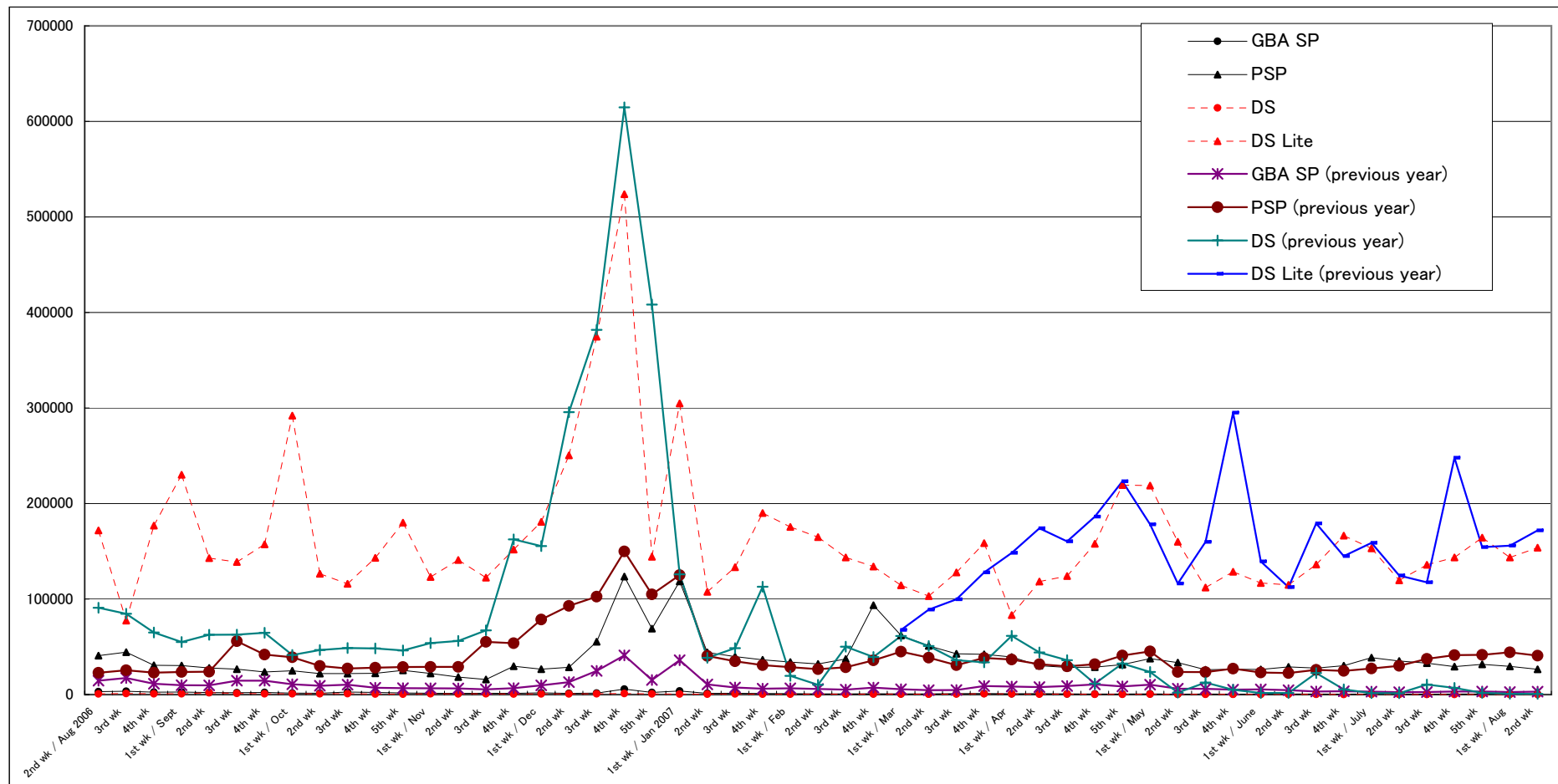
PS2 (previous year)	29,216	33,654	21,778	20,360	21,827	20,557	20,661	22,399	24,579	24,556	20,889	25,085	27,517	26,683	23,302	25,727
GC (previous year)	1,265	1,910	1,406	1,221	1,056	970	1,106	1,312	1,015	929	919	905	1,007	959	893	937
Xbox 360 (previous year)	2,742	2,021	1,496	1,415	1,218	1,095	1,143	1,475	1,315	1,676	1,191	1,020	1,317	1,513	1,182	1,025
PS3 (previous year)																
Wii (previous year)																



Comparison of Weekly Sales of GBA SP, PSP, DS and DS Lite

Units Sold	5th wk	1st wk / May	2nd wk	3rd wk	4th wk	1st wk / June	2nd wk	3rd wk	4th wk	1st wk / July	2nd wk	3rd wk	4th wk	5th wk	1st wk / Aug	2nd wk
GBA SP	544	764	398	515	464	408	615	539	426	513	476	388	571	606	464	580
PSP	31,368	37,745	33,438	26,044	26,446	26,348	28,974	27,772	30,203	38,609	35,181	32,935	29,268	31,669	29,492	26,487
DS	325	489	303	229	215	188	278	225	186	239	188	155	128	128	105	138
DS Lite	219,331	218,802	160,009	112,080	128,543	116,825	114,780	136,168	166,362	153,120	119,636	135,791	143,491	164,353	143,551	153,845

GBA SP (previous year)	8,581	10,308	6,125	6,054	5,178	5,487	4,577	3,280	3,538	3,026	2,516	2,723	3,201	3,168	2,680	3,045
PSP (previous year)	40,911	45,191	23,660	23,577	27,191	23,105	22,529	25,842	24,801	27,272	30,092	37,386	41,303	41,571	44,262	40,720
DS (previous year)	32,442	23,728	2,032	12,608	5,018	1,645	1,616	22,563	5,413	1,502	1,425	10,536	6,963	1,769	793	726
DS Lite (previous year)	223,296	178,156	116,259	159,791	295,103	139,420	112,516	179,093	144,919	158,890	124,639	117,454	247,864	154,291	155,899	171,917

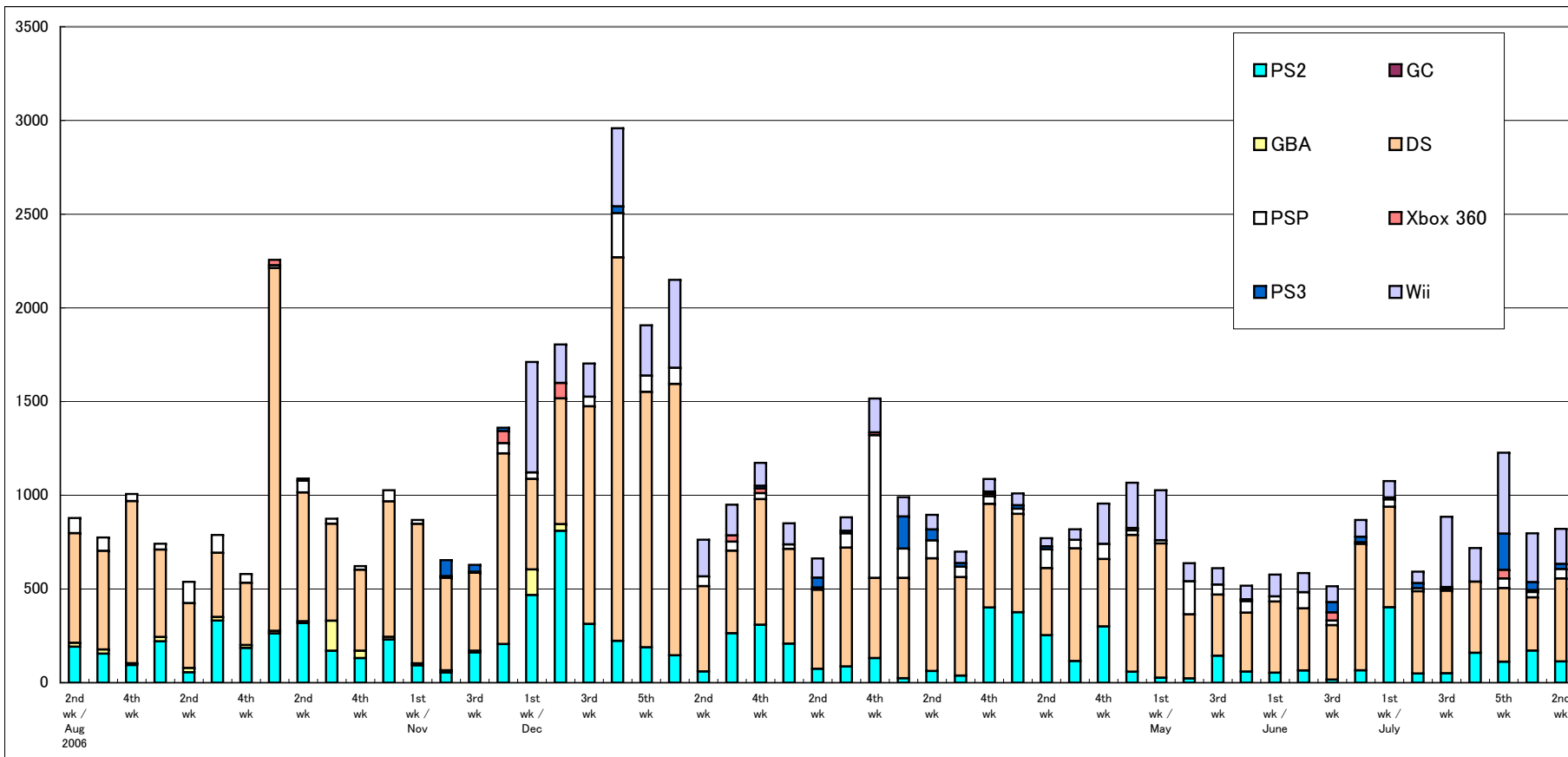


Software Sales/Share for Each Platform

*Only covering titles ranked in the TOP 30

Unit: K = 1000

	6/18-6/24		6/25-7/1		7/2-7/8		7/9-7/15		7/16-7/22		7/23-7/29		7/30-8/5		8/6-8/12		2007 to Date
	Copies Sold	Share	Copies Sold	Share	Copies Sold	Share	Copies Sold	Share	Copies Sold	Share	Copies Sold	Share	Copies Sold	Share	Copies Sold	Share	
PS2	65.9	7.6%	402.8	37.4%	49.0	8.3%	50.2	5.7%	159.3	22.2%	111.8	9.1%	171.0	21.5%	113.5	13.8%	4,419.0
GC	0.0	0.0%	0.0	0.0%	0.0	0.0%	0.0	0.0%	0.0	0.0%	0.0	0.0%	0.0	0.0%	0.0	0.0%	0.0
GBA	0.0	0.0%	0.0	0.0%	0.0	0.0%	0.0	0.0%	0.0	0.0%	0.0	0.0%	0.0	0.0%	0.0	0.0%	0.0
DS	675.1	77.7%	535.7	49.8%	438.7	74.1%	440.4	49.7%	379.9	52.9%	393.3	32.0%	284.4	35.7%	442.9	54.0%	16,086.5
PSP	0.0	0.0%	39.5	3.7%	16.7	2.8%	10.3	1.2%	0.0	0.0%	51.4	4.2%	28.2	3.5%	49.9	6.1%	2,360.3
Xbox 360	9.0	1.0%	0.0	0.0%	0.0	0.0%	0.0	0.0%	0.0	0.0%	45.5	3.7%	10.2	1.3%	0.0	0.0%	217.3
PS3	28.9	3.3%	10.2	1.0%	27.2	4.6%	9.6	1.1%			193.7	15.8%	43.3	5.4%	27.3	3.3%	769.4
Wii	89.6	10.3%	87.4	8.1%	60.8	10.3%	375.2	42.4%	179.6	25.0%	431.4	35.2%	260.1	32.6%	186.9	22.8%	4,847.8
Total	868.5	100.0%	1,075.7	100.0%	592.4	100.0%	885.7	100.0%	718.8	100.0%	1,227.2	100.0%	797.2	100.0%	820.7	100.0%	



Market Scale Transition

Unit: 100 million yen	5th wk	1st wk / May	2nd wk	3rd wk	4th wk	1st wk / June	2nd wk	3rd wk	4th wk	1st wk / July	2nd wk	3rd wk	4th wk	5th wk	1st wk / Aug	2nd wk	2007 to Date
Hardware	68.1	71.7	50.7	42.0	46.5	46.8	46.1	52.0	54.4	58.7	51.3	61.9	54.8	70.9	56.7	58.7	1,950.2
Software	75.3	75.7	44.0	44.9	41.5	44.2	43.9	41.6	57.9	78.5	46.3	64.3	56.9	90.0	63.7	63.2	2,115.2
Total	143.5	147.4	94.7	86.9	88.0	91.0	90.0	93.6	112.3	137.2	97.6	126.2	111.7	160.9	120.3	121.9	4,065.4

Hardware (previous year)	55.7	49.3	28.8	36.6	56.9	31.6	27.4	41.4	33.9	36.1	30.8	33.3	54.2	39.2	39.2	41.0
Software (previous year)	87.3	60.0	36.7	33.4	76.6	40.7	38.1	37.7	58.0	44.2	43.5	55.6	55.7	73.6	65.7	54.0
Total (previous year)	143.0	109.3	65.6	70.0	133.5	72.3	65.4	79.2	91.9	80.3	74.2	88.9	109.9	112.8	104.8	95.0

