

Famitsu Marketing Data Service

Data Collected by Famitsu: from June 25 to July 1, 2007

Software Sales Ranking: TOP 30

Hardware Sales/Share

Hardware Sales: Comparison of Weekly Sales with Previous Year's

Software Sales/Share for Each Platform

Market Size: Comparison of Scale Transition with Previous Year's

Software Sales Ranking: TOP 30

Note 1: Based on two different data, quantity of stock numbers may have a margin of error.

Note 2: In addition to game shops, titles listed in colored lines are also available at five convenience-store che K = 1000

This Week	Last Week	Week Before Last	Platform	Title	Publisher	Sales Date	Price (incl. tax)	Genre	Copies Sold/wk (Estimated)	Copies Shipped (Estimated)	Cumulative Copies Sold (Estimated)	Sales-Stock Ratio	Copies in Stock
1	NEW	-	PS2	Super Robot Taisen OG - Original Generations	BANPRESTO	06-28-07	¥7,329	Sim/RPG	332,373	367,753	332,373	90.4%	35.4K
2	1	-	DS	Zelda no Densetsu: Mugen no Sunadokei The Legend of Zelda: Phantom	Nintendo	06-23-07	¥4,800	Act/RPG	160,604	481,227	448,886	93.3%	32.3-37.6K
3	2	-	DS	Itadaki Street DS	SQUARE ENIX	06-21-07	¥5,040	Board	68,849	266,447	209,409	78.6%	31.2-57K
4	3	1	DS	Miru Chikara wo Jissen de Kitaeru: DS Mejikara Training Medicara	Nintendo	05-31-07	¥3,800	Other	50,884	381,093	352,823	92.6%	28.3-29.3K
5	NEW	-	PS2	Tales of Fandom Vol. 2 (Tear Version/Luke Version)	NAMCO BANDAI Games	06-28-07	¥6,090	Adv/Other	45,354	69,646	45,354	65.1%	24.3K
6	NEW	-	PSP	Ratchet & Clank 5: Gekitotsu! Dodeka Ginga no MiriMiri Gundan Ratchet & Clank: Size Matters	SCEJ (SONY)	06-28-07	¥4,980	Act	39,529	59,879	39,529	66.0%	20.4K
7	5	4	Wii	Wii Sports	Nintendo	12-02-06	¥4,800	Act	31,913	1,713,639	1,681,915	98.1%	31.7-36K
8	NEW	-	DS	Kiku! Kaku! Kotoba wo Fuyasu! Hajimete no Eigo Training - EiTore	Benesse Corporation	06-28-07	¥3,990	Other	27,297	45,012	27,297	60.6%	17.7K
9	NEW	-	Wii	Donkey Kong Taru Jet Race DK Bongo Blast	Nintendo	06-28-07	¥5,800	Act	26,215	67,488	26,215	38.8%	41.3K
10	NEW	-	DS	KateKyo Hitman Reborn! DS: Flame Rumble Mukuro Kyoshu!	TAKARATOMY	06-28-07	¥5,040	Act	22,392	37,584	22,392	59.6%	15.2K
11	8	6	DS	Eigo ga Nigate na Otona no DS Training Motto Eigo-zuke	Nintendo	03-29-07	¥3,800	Other	20,198	411,356	365,448	88.8%	42-45.9K
12	9	5	DS	Tohoku Daigaku Mirai-Kagaku-Gijutsu-Kyodo-Kenkyu-Center Kawashima Ryuta Kyoju Kanshu: Motto Nou wo Kitaeru Otona no DS Training Brain Age 2: More Training in Minutes a Day	Nintendo	12-29-05	¥2,800	Other	19,895	4,500,275	4,473,362	99.4%	26.9-29K
13	10	7	Wii	Hajimete no Wii Wii Play	Nintendo	12-02-06	¥4,800	Other	19,682	1,340,193	1,313,801	98.0%	26.4-44.6K
14	11	8	DS	New Super Mario Bros.	Nintendo	05-25-06	¥4,800	Act	18,451	4,629,229	4,606,027	99.5%	23.2-33.2K

15	NEW	-	DS	"Ukkari" wo Nakuso! Bunsho Yomi Training - YomiTore	Benesse Corporation	06-28-07	¥3,990	Other	18,328	37,834	18,328	48.4%	19.5K
16	14	13	DS	Mario Kart DS	Nintendo	12-08-05	¥4,800	Act	15,895	2,268,503	2,249,504	99.2%	19-28.6K
17	NEW	-	PS2	Shinseiki Evangelion: Battle Orchestra	BROCCOLI	06-28-07	¥7,140	Act	15,726	20,465	15,726	76.8%	4.7K
18	17	15	DS	Oide yo Dobutsu no Mori Animal Crossing: Wild World	Nintendo	11-23-05	¥4,800	Other	15,127	4,208,149	4,185,178	99.5%	23-30K
19	16	12	DS	Eigo ga Nigate na Otona no DS Training Eigo-zuke	Nintendo	01-26-06	¥3,800	Other	13,921	1,890,312	1,868,810	98.9%	21.5-23.2K
20	15	9	DS	Tohoku Daigaku Mirai-Kagaku-Gijutsu-Kyodo-Kenkyu-Center Kawashima Ryuta Kyoju Kanshu: Nou wo Kitaeru Otona no DS Training Brain Age: Train Your Brain in Minutes a Day	Nintendo	05-19-05	¥2,800	Other	13,451	3,411,154	3,389,824	99.4%	21.3-26K
21	13	11	DS	Moero! Nekketsu Rhythm-Damashii Osu! Tatakae! Oendan 2	Nintendo	05-17-07	¥4,800	Act	12,516	197,633	173,151	87.6%	24.5-31.9K
22	NEW	-	DS	Kawa no Nushi Tsuru: Komorebi no Tani Seseragi no Uta	Marvelous Entertainment	06-28-07	¥5,040	RPG	11,621	35,713	11,621	32.5%	24.1K
23	19	21	DS	Pocket Monster Diamond/Pearl	Pokemon	09-28-06	¥4,800	RPG	11,463	5,238,213	5,196,558	99.2%	41.7-96.9K
24	NEW	-	PS3	Rainbow Six Vegas Tom Clancy's Rainbow Six Vegas	Ubisoft	06-28-07	¥7,140	Act/Sht	10,225	15,081	10,225	67.8%	4.9K
25	6	-	Wii	Hajime no Ippo Revolution	AQ INTERACTIVE	06-21-07	¥6,090	Act	9,596	50,521	35,076	69.4%	9.9-15.4K
26	4	-	PS2	Growlanser VI	ATLUS	06-21-07	¥7,329	RPG	9,352	54,283	42,266	77.9%	5-12K
27	20	19	DS	Layton Kyoju to Fushigi na Machi	LEVEL-5	02-15-07	¥4,800	Adv	8,906	604,866	586,676	97.0%	14.3-18.2K
28	-	-	DS	Yamakawa Shuppansha Kanshu: Shosetsu Nihonshi B Sogo Training	NAMCO BANDAI Games	06-07-07	¥3,990	Other	8,734	37,839	21,870	57.8%	6.2-16K
29	23	22	DS	Yoshi Island DS Yoshi's Island DS	Nintendo	03-08-07	¥4,800	Act	8,657	809,280	788,530	97.4%	20.8-24.7K
30	21	18	DS	Momotaro Dentetsu DS: Tokyo & Japan	Hudson	04-26-07	¥5,040	Board	8,541	274,593	254,993	92.9%	19.6-21.9K

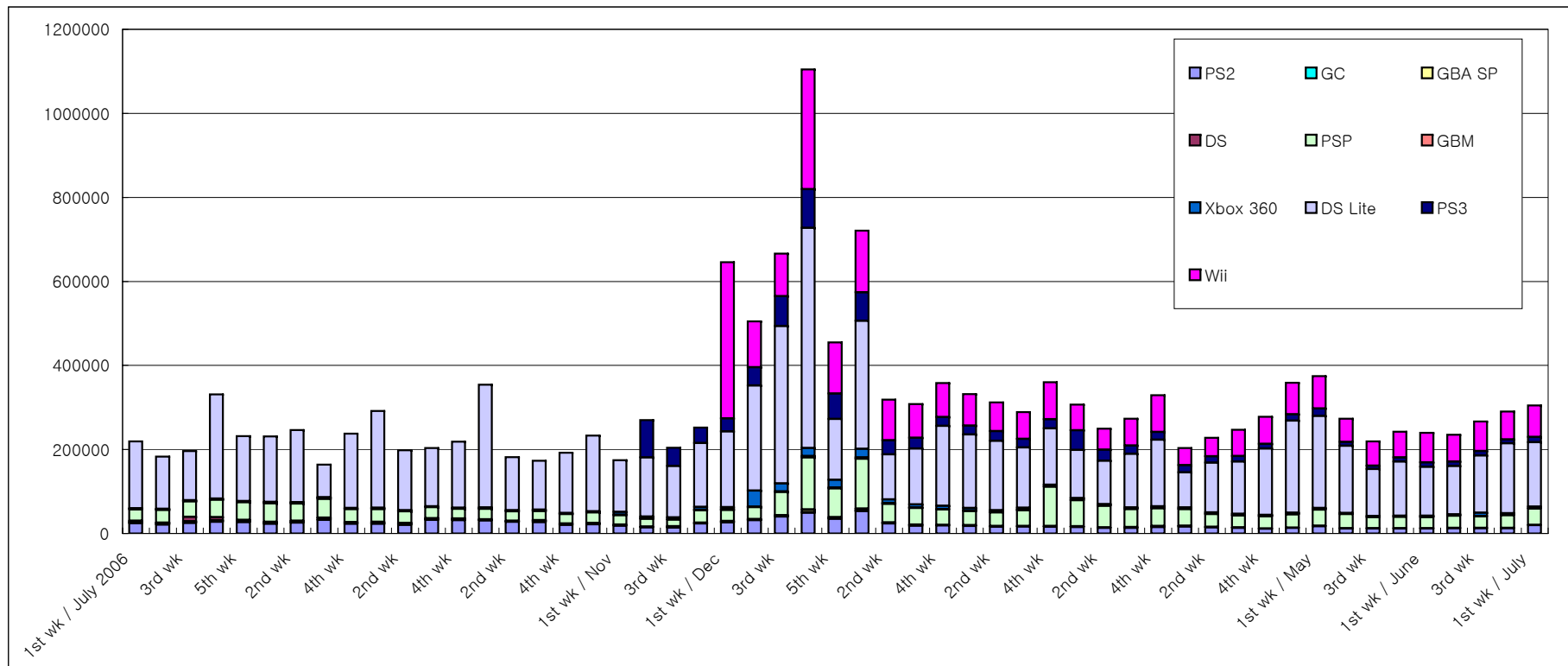
Other New Titles

Platform	Title	Publisher	Sales Date	Price (incl. tax)	Genre	Copies Sold/wk (Estimated)	Sales-Stock Ratio	Copies Shipped (Estimated)	Copies in Stock
PS2	Baroque	STING	06-28-07	¥6,800	Act/RPG	8,023	59.0%	13,589	5.6K
PS2	Buso Renkin: Yokoso Papillon Park e	marverous Entertainmen	06-28-07	¥7,140	Act	6,504	47.7%	13,647	7.1K
PS2	Tales of the Abyss [PlayStation 2 the Best]	NAMCO BANDAI Games	06-28-07	¥2,800	RPG	4,237	52.4%	8,080	3.8K
PS2	Majokko A La Mode II: Maho to Ken no Struggle	GN Software	06-28-07	¥7,140	Adv/Sim	3,246	51.5%	6,297	3.1K
PS3	Marvel: Ultimate Alliance	Interchannel	06-28-07	¥7,140	Act/RPG	3,138	40.5%	7,750	4.6K
PSP	Secret of Evangelion Portable	CYBERFRONT	06-28-07	¥5,040	Adv	2,975	36.9%	8,070	5.1K
PS2	Urban Chaos Urban Chaos: Riot Response	Spike	06-28-07	¥7,140	Act/Sht	2,666	28.2%	9,469	6.8K
PS2	Ju-jigen Rippotai Sypher: Game of Survival	views	06-28-07	¥7,140	Adv	2,586	50.4%	5,126	2.5K
PSP	World Soccer Winning Eleven 10: Ubiquitous Evolution [PSP the Best] Winning Eleven: Pro Evolution Soccer 2007	KONAMI	06-28-07	¥2,800	Act	2,505	30.2%	8,291	5.8K
PSP	Chukana Janshi Tenho Painyan Remix	JALECO	06-28-07	¥6,090	Table	2,464	46.3%	5,326	2.9K
PS2	Que: Ancient Leaf no Yosei	PrincessSoft	06-28-07	¥7,350	Adv	2,442	62.1%	3,934	1.5K
PS2	Devil May Cry 3: Special Edition [PlayStation 2 the Best]	CAPCOM	06-28-07	¥3,129	Act/Adv	2,117	42.2%	5,014	2.9K
DS	Chukana Janshi Tenho Painyan Remix	JALECO	06-28-07	¥5,040	Table	2,096	32.5%	6,450	4.4K
PSP	Boku no Natsuyasumi Portable [PSP the Best]	SCEJ (SONY)	06-28-07	¥2,800	Adv	1,744	34.1%	5,117	3.4K
DS	Otona no Onnajikara Kentei	KONAMI	06-28-07	¥3,990	Other	1,725	24.9%	6,917	5.2K
PS2	Dragon Quest: Shonen Yangus to Fushigi no Dungeon [Ultimate Hits]	SQUARE ENIX	06-28-07	¥2,940	RPG	1,636	20.3%	8,071	6.4K
PSP	Super Robot Taisen MX Portable [PSP the Best]	BANPRESTO	06-28-07	¥2,940	Sim/RPG	1,582	35.1%	4,501	2.9K
PS2	The King of Fighters XI [SNK Best Collection]	SNK PLAYMORE	06-28-07	¥2,940	Act	1,214	55.5%	2,187	1.K
PS2	Valkyrie Profile 2: Silmeria [Ultimate Hits]	SQUARE ENIX	06-28-07	¥2,940	RPG	1,004	27.2%	3,697	2.7K

DS	Simple DS Series Vol. 16: The Sagaso Fushigi na Konchu no Mori	D3 PUBLISHER	06-28-07	¥2,800	Act	841	10.8%	7,814	7.K
DS	Uranai demo Shite Miyoka DS	Hudson	06-28-07	¥2,940	Other	750	15.2%	4,935	4.2K
DS	Maru Kaite DonDon Oboeru Kyo! no Tsugawa-shiki Kanji Kioku-jutsu	ERTAIN	06-28-07	¥3,990	Other	587	9.8%	5,961	5.4K
PS2	Rurouni Kenshin: Meiji Kenkaku Roman-tan - Enjo! Kyoto Rinne [PlayStation 2 the Best]	BANPRESTO	06-28-07	¥2,940	Act	534	24.6%	2,171	1.6K
PSP	Magna Carta Portable [PSP the Best]	BANPRESTO	06-28-07	¥2,940	RPG	516	22.1%	2,335	1.8K

Hardware Sales/Share

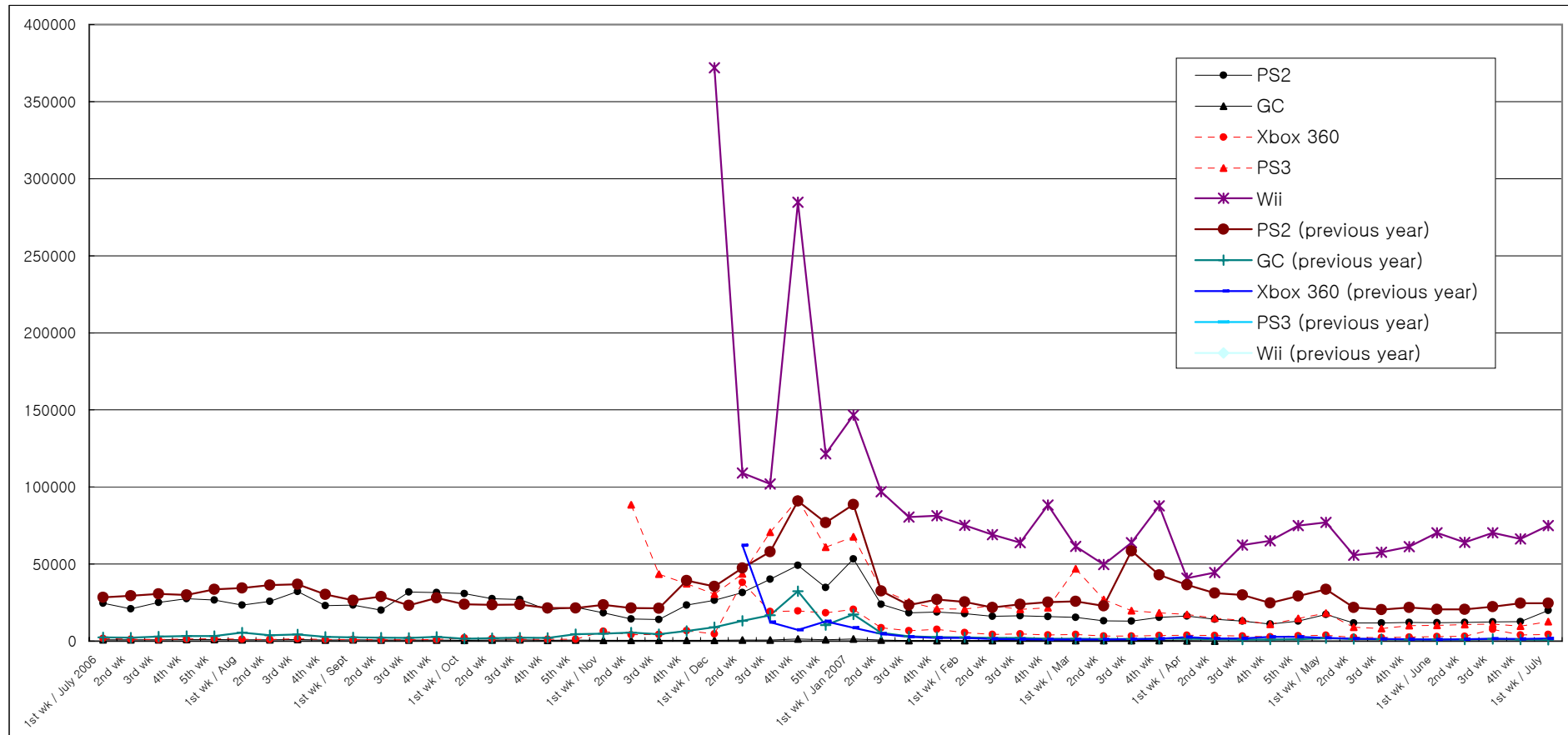
	5/7-5/13		5/14-5/20		5/21-5/27		5/28-6/3		6/4-6/10		6/11-6/17		6/18-6/24		6/25-7/1		2007 to Date
	Units Sold	Share	Units Sold	Share	Units Sold	Share	Units Sold	Share	Units Sold	Share	Units Sold	Share	Units Sold	Share	Units Sold	Share	
PS2	11,854	4.3%	11,749	5.4%	12,113	5.0%	11,916	5.0%	12,180	5.2%	12,406	4.7%	12,602	4.3%	19,859	6.5%	427,331
GC																	5,710
GBA SP	398	0.1%	515	0.2%	464	0.2%	408	0.2%	615	0.3%	539	0.2%	426	0.1%	513	0.2%	22,677
DS	303	0.1%	229	0.1%	215	0.1%	188	0.1%	278	0.1%	225	0.1%	186	0.1%	239	0.1%	11,353
PSP	33,438	12.2%	26,044	11.9%	26,446	10.9%	26,348	11.0%	28,974	12.3%	27,772	10.4%	30,203	10.4%	38,609	12.7%	1,067,271
GBM	403	0.1%	371	0.2%	441	0.2%	405	0.2%	654	0.3%	634	0.2%	455	0.2%	525	0.2%	24,277
Xbox 360	2,369	0.9%	2,296	1.0%	2,664	1.1%	2,873	1.2%	3,031	1.3%	7,654	2.9%	4,058	1.4%	4,318	1.4%	126,883
DS Lite	160,009	58.5%	112,080	51.1%	128,543	53.1%	116,825	48.8%	114,780	48.8%	136,168	51.0%	166,362	57.3%	153,120	50.2%	3,867,187
PS3	8,962	3.3%	8,189	3.7%	9,984	4.1%	10,195	4.3%	10,756	4.6%	11,012	4.1%	9,665	3.3%	12,677	4.2%	516,231
Wii	55,724	20.4%	57,654	26.3%	61,339	25.3%	70,222	29.3%	64,039	27.2%	70,356	26.4%	66,357	22.9%	75,010	24.6%	1,850,015
Total	273,460	100.0%	219,127	100.0%	242,209	100.0%	239,380	100.0%	235,307	100.0%	266,766	100.0%	290,314	100.0%	304,870	100.0%	



Comparison of Weekly Sales of PS2, GC, Xbox 360, PS3, and Wii

Units Sold	3rd wk	4th wk	1st wk / Apr	2nd wk	3rd wk	4th wk	5th wk	1st wk / May	2nd wk	3rd wk	4th wk	1st wk / June	2nd wk	3rd wk	4th wk	1st wk / July
PS2	12,901	15,434	16,353	14,167	12,951	11,162	13,040	17,333	11,854	11,749	12,113	11,916	12,180	12,406	12,602	19,859
GC	305	310	258	0												
Xbox 360	3,227	3,616	3,774	3,583	3,354	2,853	3,530	3,753	2,369	2,296	2,664	2,873	3,031	7,654	4,058	4,318
PS3	19,787	18,391	17,289	14,820	13,539	10,899	14,700	18,186	8,962	8,189	9,984	10,195	10,756	11,012	9,665	12,677
Wii	63,941	87,704	40,798	44,520	62,361	65,093	74,950	77,077	55,724	57,654	61,339	70,222	64,039	70,356	66,357	75,010

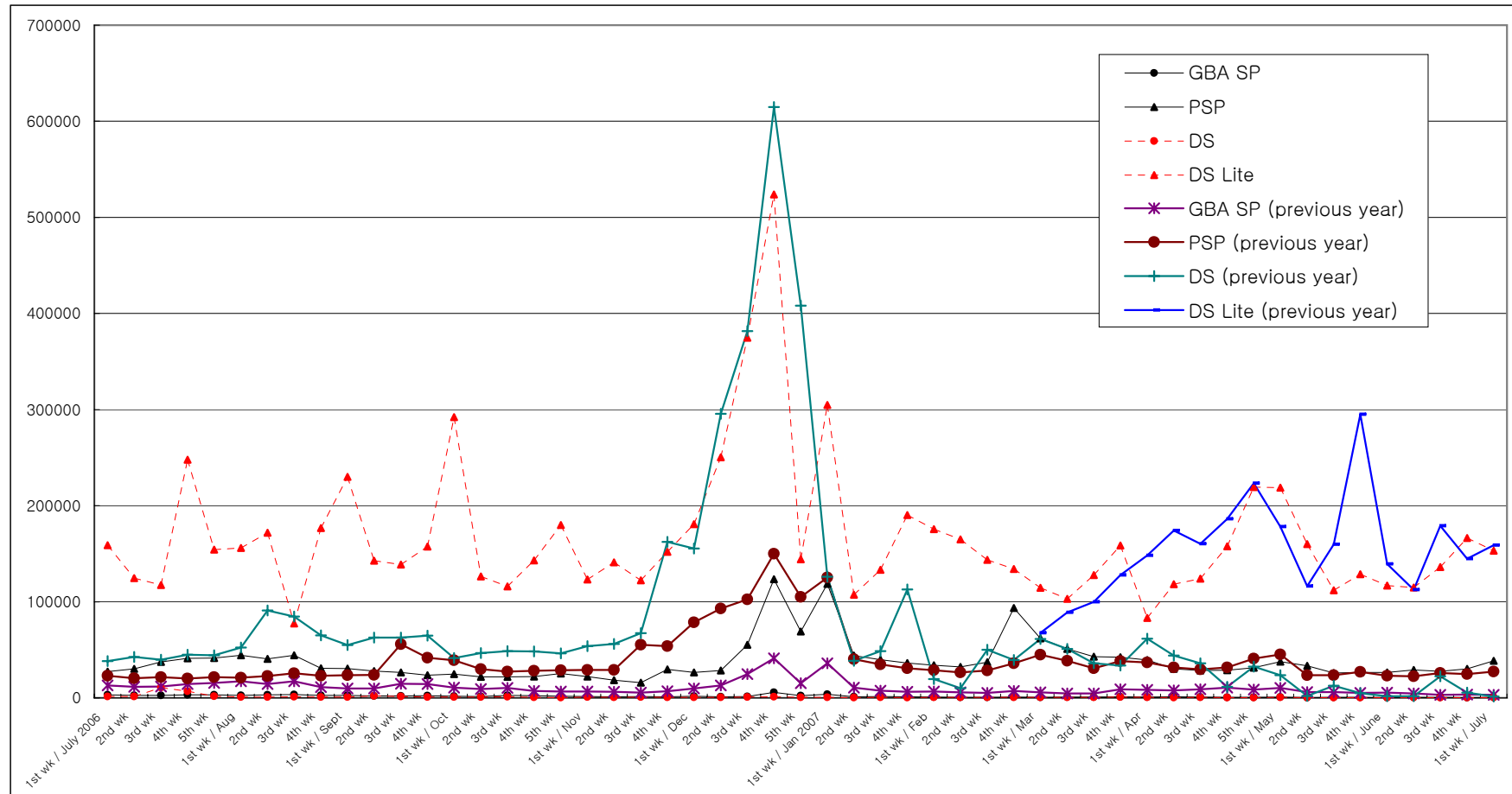
PS2 (previous year)	58,502	42,881	36,574	31,189	30,005	24,827	29,216	33,654	21,778	20,360	21,827	20,557	20,661	22,399	24,579	24,556
GC (previous year)	1,353	1,539	1,592	1,266	1,113	1,087	1,265	1,910	1,406	1,221	1,056	970	1,106	1,312	1,015	929
Xbox 360 (previous year)	1,181	1,550	2,636	1,752	1,780	2,852	2,742	2,021	1,496	1,415	1,218	1,095	1,143	1,475	1,315	1,676
PS3 (previous year)																
Wii (previous year)																



Comparison of Weekly Sales of GBA SP, PSP, DS and DS Lite

Units Sold	3rd wk	4th wk	1st wk / Apr	2nd wk	3rd wk	4th wk	5th wk	1st wk / May	2nd wk	3rd wk	4th wk	1st wk / June	2nd wk	3rd wk	4th wk	1st wk / July
GBA SP	1,003	1,118	909	1,033	739	524	544	764	398	515	464	408	615	539	426	513
PSP	42,762	42,226	39,422	30,308	28,476	28,717	31,368	37,745	33,438	26,044	26,446	26,348	28,974	27,772	30,203	38,609
DS	629	889	682	383	498	323	325	489	303	229	215	188	278	225	186	239
DS Lite	127,882	158,609	83,218	118,391	124,038	157,866	219,331	218,802	160,009	112,080	128,543	116,825	114,780	136,168	166,362	153,120

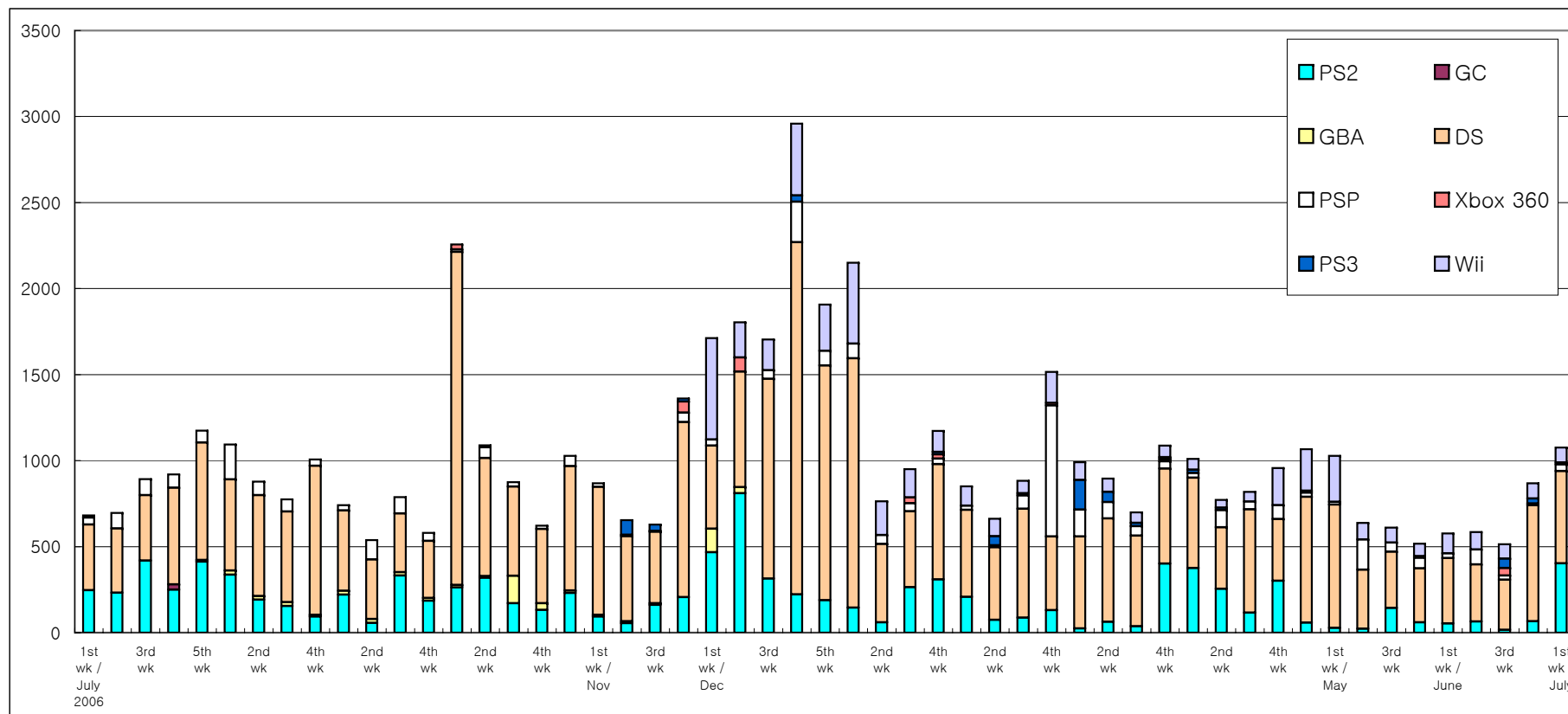
GBA SP (previous year)	4,725	8,922	8,394	7,817	8,926	10,589	8,581	10,308	6,125	6,054	5,178	5,487	4,577	3,280	3,538	3,026
PSP (previous year)	30,766	38,321	36,713	31,723	29,586	31,781	40,911	45,191	23,660	23,577	27,191	23,105	22,529	25,842	24,801	27,272
DS (previous year)	36,051	33,713	61,500	44,109	36,041	11,438	32,442	23,728	2,032	12,608	5,018	1,645	1,616	22,563	5,413	1,502
DS Lite (previous year)	99,740	127,911	148,295	174,102	160,340	186,334	223,296	178,156	116,259	159,791	295,103	139,420	112,516	179,093	144,919	158,890



Software Sales/Share for Each Platform

*Only covering titles ranked in the TOP 30

Unit: K = 1000	5/7-5/13		5/14-5/20		5/21-5/27		5/28-6/3		6/4-6/10		6/11-6/17		6/18-6/24		6/25-7/1		2007 to Date
	Copies Sold	Share	Copies Sold	Share	Copies Sold	Share	Copies Sold	Share	Copies Sold	Share	Copies Sold	Share	Copies Sold	Share	Copies Sold	Share	
PS2	22.7	3.6%	144.1	23.6%	59.5	11.5%	53.3	9.2%	65.2	11.1%	16.5	3.2%	65.9	7.6%	402.8	37.4%	3,764.1
GC	0.0	0.0%	0.0	0.0%	0.0	0.0%	0.0	0.0%	0.0	0.0%	0.0	0.0%	0.0	0.0%	0.0	0.0%	0.0
GBA	0.0	0.0%	0.0	0.0%	0.0	0.0%	0.0	0.0%	0.0	0.0%	0.0	0.0%	0.0	0.0%	0.0	0.0%	0.0
DS	342.3	53.7%	326.1	53.4%	314.6	60.8%	379.7	65.8%	331.8	56.7%	290.4	56.4%	675.1	77.7%	535.7	49.8%	13,706.9
PSP	176.6	27.7%	53.1	8.7%	61.3	11.8%	27.7	4.8%	86.0	14.7%	24.8	4.8%	0.0	0.0%	39.5	3.7%	2,203.8
Xbox 360	0.0	0.0%	0.0	0.0%	9.9	1.9%	0.0	0.0%	0.0	0.0%	43.6	8.5%	9.0	1.0%	0.0	0.0%	161.7
PS3	0.0	0.0%	0.0	0.0%	0.0	0.0%	0.0	0.0%	0.0	0.0%	55.0	10.7%	28.9	3.3%	10.2	1.0%	468.3
Wii	96.1	15.1%	87.6	14.3%	72.3	14.0%	116.5	20.2%	101.9	17.4%	84.2	16.4%	89.6	10.3%	87.4	8.1%	3,353.7
Total	637.7	100.0%	610.8	100.0%	517.5	100.0%	577.2	100.0%	584.8	100.0%	514.5	100.0%	868.5	100.0%	1,075.7	100.0%	



Market Scale Transition

Unit: 100 million yen	3rd wk	4th wk	1st wk / Apr	2nd wk	3rd wk	4th wk	5th wk	1st wk / May	2nd wk	3rd wk	4th wk	1st wk / June	2nd wk	3rd wk	4th wk	1st wk / July	2007 to Date
Hardware	55.7	65.5	42.4	45.1	48.7	52.6	68.1	71.7	50.7	42.0	46.5	46.8	46.1	52.0	54.4	58.7	1,595.9
Software	51.9	80.9	78.7	60.0	57.7	69.3	75.3	75.7	44.0	44.9	41.5	44.2	43.9	41.6	57.9	78.5	1,730.9
Total	107.6	146.4	121.0	105.1	106.4	121.9	143.5	147.4	94.7	86.9	88.0	91.0	90.0	93.6	112.3	137.2	3,326.8

Hardware (previous year)	40.5	43.2	48.6	47.6	43.7	45.7	55.7	49.3	28.8	36.6	56.9	31.6	27.4	41.4	33.9	36.1	
Software (previous year)	184.2	78.6	76.2	51.6	39.3	60.5	87.3	60.0	36.7	33.4	76.6	40.7	38.1	37.7	58.0	44.2	
Total (previous year)	224.6	121.8	124.9	99.2	83.0	106.2	143.0	109.3	65.6	70.0	133.5	72.3	65.4	79.2	91.9	80.3	

