

Famitsu Marketing Data Service

Data Collected by Famitsu: from May 7 to May 13, 2007

Software Sales Ranking: TOP 30

Hardware Sales/Share

Hardware Sales: Comparison of Weekly Sales with Previous Year's

Software Sales/Share for Each Platform

Market Size: Comparison of Scale Transition with Previous Year's

Software Sales Ranking: TOP 30

Note 1: Based on two different data, quantity of stock numbers may have a margin of error.

Note 2: In addition to game shops, titles listed in colored lines are also available at five convenience-store chair K = 1000

This Week	Last Week	Week Before Last	Platform	Title	Publisher	Sales Date	Price (incl. tax)	Genre	Copies Sold/wk (Estimated)	Copies Shipped (Estimated)	Cumulative Copies Sold (Estimated)	Sales-Stock Ratio	Copies in Stock
1	NEW	-	PSP	Final Fantasy Tactics: Shishi Senso Final Fantasy Tactics: The War of the Lions	SQUARE ENIX	05-10-07	¥5,040	Sim/RPG	169,768	200,405	169,768	84.7%	30.6K
2	1	1	DS	Final Fantasy XII: Revenant Wings	SQUARE ENIX	04-26-07	¥5,040	RPG	35,574	471,631	439,916	93.3%	31.7-46.1K
3	2	2	Wii	Super Paper Mario	Nintendo	04-19-07	¥5,800	Act/Adv	28,102	395,440	357,490	90.4%	38-61.8K
4	3	4	Wii	Wii Sports	Nintendo	12-02-06	¥4,800	Act	27,926	1,539,218	1,484,949	96.5%	54.3-61.3K
5	12	14	DS	Tohoku Daigaku Mirai-Kagaku-Gijutsu-Kyodo-Kenkyu-Center Kawashima Ryuta Kyoju Kanshu: Motto Nou wo Kitaeru Otona no DS Training	Nintendo	12-29-05	¥2,800	Other	27,529	4,360,172	4,333,674	99.4%	26.5-37.5K
6	4	3	DS	Momotaro Dentetsu DS: Tokyo & Japan	Hudson	04-26-07	¥5,040	Board	26,325	196,940	158,128	80.3%	38.8-40.9K
7	8	13	DS	New Super Mario Bros.	Nintendo	05-25-06	¥4,800	Act	23,536	4,495,297	4,468,941	99.4%	26.4-40.4K
8	5	5	Wii	Wii de Yawaraka Atama Juku Big Brain Academy: Wii Degree	Nintendo	04-26-07	¥4,800	Other	22,598	206,358	123,318	59.8%	83-98.2K
9	15	15	DS	Elgo ga Nigate na Otona no DS Training Motto Eigo-zuke	Nintendo	03-29-07	¥3,800	Other	20,782	314,244	215,817	68.7%	54.7-98.4K
10	17	24	DS	Tohoku Daigaku Mirai-Kagaku-Gijutsu-Kyodo-Kenkyu-Center Kawashima Ryuta Kyoju Kanshu: Nou wo Kitaeru Otona no DS Training Brain Age: Train Your Brain in Minutes a Day	Nintendo	05-19-05	¥2,800	Other	19,540	3,304,062	3,289,184	99.5%	14.9-33K
11	6	11	DS	Yoshi Island DS Yoshi's Island DS	Nintendo	03-08-07	¥4,800	Act	18,483	750,442	708,752	94.4%	41.7-62K
12	13	8	DS	Panel de Pon DS Planet Puzzle League	Nintendo	04-26-07	¥3,800	Act	17,604	99,881	82,364	82.5%	17.5-36.4K
13	9	10	Wii	Hajimete no Wii Wii Play	Nintendo	12-02-06	¥4,800	Other	17,501	1,227,010	1,190,125	97.0%	36.9-48.6K
14	14	20	DS	Mario Kart DS	Nintendo	12-08-05	¥4,800	Act	16,756	2,168,604	2,142,190	98.8%	26.4-29.1K
15	11	6	DS	Gyakuten Saiban 4	CAPCOM	04-12-07	¥5,040	Adv	16,318	439,422	391,351	89.1%	42-48.1K
16	16	21	DS	Oide yo Dobutsu no Mori Animal Crossing: Wild World	Nintendo	11-23-05	¥4,800	Other	15,533	4,107,469	4,085,571	99.5%	21.9-30.6K

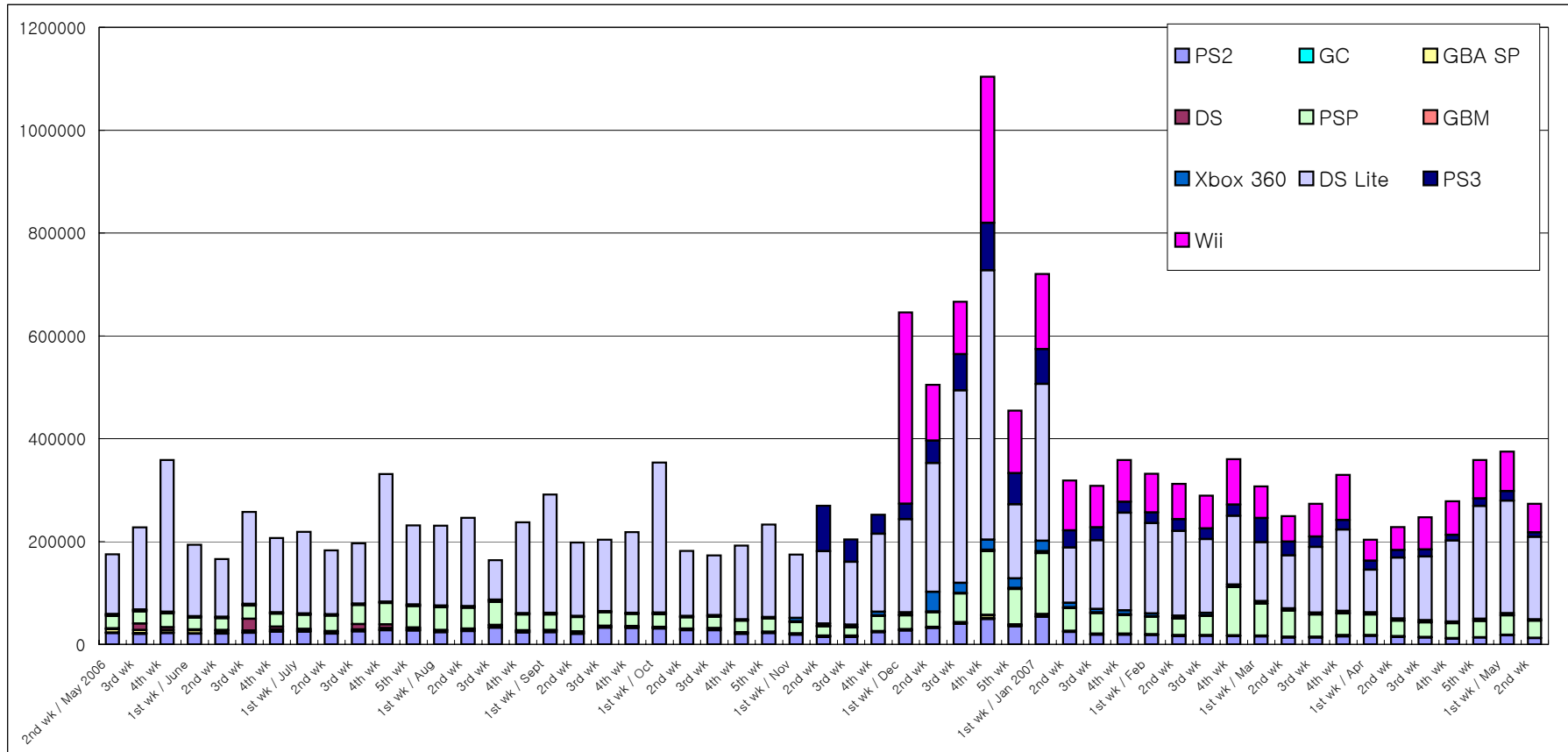
17	7	9	DS	Mario vs. Donkey Kong 2: MiniMini Daikoshin!	Nintendo	04-12-07	¥4,800	Act	14,555	243,842	218,978	89.8%	24.9-55.1K
18	20	29	DS	Mario vs. Donkey Kong 2: March of the Eigo ga Nigate na Otona no DS Training Eigo-zuke	Nintendo	01-26-06	¥3,800	Other	13,700	1,790,632	1,775,316	99.1%	15.3-19.1K
19	10	17	DS	Pocket Monster Diamond/Pearl	Pokemon	09-28-06	¥4,800	RPG	13,069	5,172,916	5,109,839	98.8%	3.1-115.3K
20	19	28	DS	Kanshu Nihon Joshiki-ryoku Kentei Kyokai: Imasara Hito ni wa Kikenai Otona no Joshiki-ryoku Training DS	Nintendo	10-26-06	¥3,800	Other	12,788	1,408,881	1,395,216	99.0%	13.7-35.1K
21	18	19	DS	Layton Kyoju to Fushigi na Machi	LEVEL-5	02-15-07	¥4,800	Adv	11,897	540,414	517,779	95.8%	22.6-24K
22	NEW	-	PS2	Wrestle Kingdom 2: Pro Wrestling Sekai Taisen	Yuke's	05-10-07	¥7,140	Act	9,515	20,723	9,515	45.9%	11.2K
23	23	30	DS	Kotoba no Puzzle Mojipittan DS	NAMCO BANDAI Games	03-15-07	¥2,940	Pzl	9,246	291,000	269,960	92.8%	21-45K
24	29	-	DS	Zaidan Hojin Nihon Kanji Noryoku Kentei Kyokai Koshiki Soft: 200-man-nin no KanKen Tokoton Kanji-nou	IE Institute	11-09-06	¥2,499	Other	8,714	425,907	418,914	98.4%	7-7.8K
25	26	25	DS	Nodame Cantabile	NAMCO BANDAI Games	04-19-07	¥5,040	Adv	7,049	140,964	64,050	45.4%	38-76.9K
26	-	-	PSP	Monster Hunter Portable 2nd Monster Hunter Freedom 2	CAPCOM	02-22-07	¥5,229	Act	6,848	1,204,934	1,188,947	98.7%	15.8-16K
27	-	-	DS	Zaidan Hojin Nihon Kanji Noryoku Kentei Kyokai Konin: KanKen DS	Rocket Company	09-28-06	¥3,990	Other	6,769	549,033	534,290	97.3%	14.7-18.9K
28	25	27	PS2	Pro Yakyu Spirits 4	KONAMI	04-01-07	¥7,329	Act	6,588	176,550	162,236	91.9%	8.9-14.3K
29	-	-	PS2	Musou Orochi Orochi Warriors	KOEI	03-21-07	¥7,140	Act	6,562	624,012	609,716	97.7%	13.7-14.3K
30	-	-	DS	Kenko Oen Recipe 1000: DS Kondate Zenshu	Nintendo	12-07-06	¥3,800	Other	6,523	379,905	366,672	96.5%	13.2-16.6K

Other New Titles

Platform	Title	Publisher	Sales Date	Price (incl. tax)	Genre	Copies Sold/wk (Estimated)	Sales-Stock Ratio	Copies Shipped (Estimated)	Copies in Stock
PS2	Simple 2000 Series Vol. 117: The Zerosen	D3 PUBLISHER	05-10-07	¥2,100	Sht	2,019	22.3%	9,065	7.K
DS	Saikyo Todai Shogi DS	Mainichi Communications	05-10-07	¥5,040	Board	493	11.7%	4,211	3.7K

Hardware Sales/Share

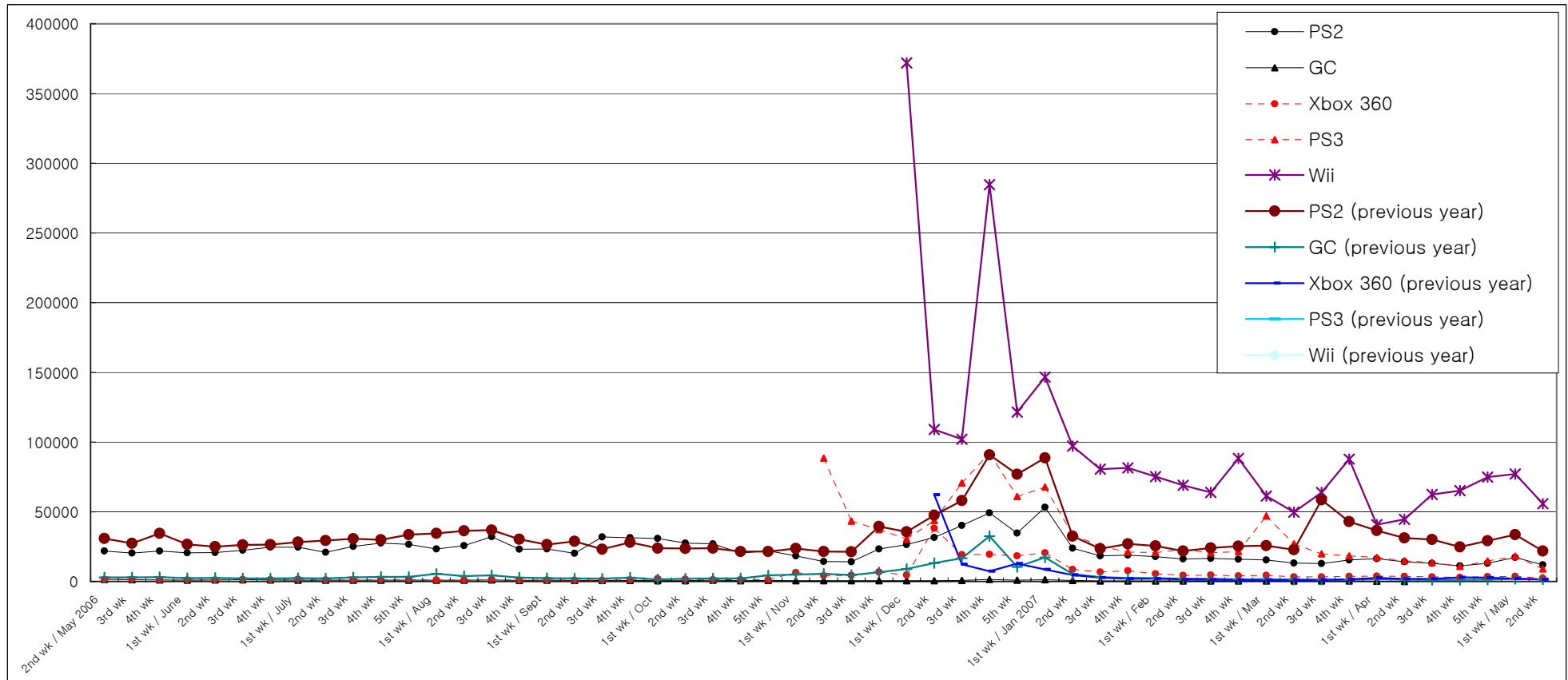
	3/19-3/25		3/26-4/1		4/2-4/8		4/9-4/15		4/16-4/22		4/23-4/29		4/30-5/6		5/7-5/13		2007 to Date
	Units Sold	Share	Units Sold	Share	Units Sold	Share	Units Sold	Share	Units Sold	Share	Units Sold	Share	Units Sold	Share	Units Sold	Share	
PS2	15,434	4.7%	16,353	8.0%	14,167	6.2%	12,951	5.2%	11,162	4.0%	13,040	3.6%	17,333	4.6%	11,854	4.3%	334,506
GC	310	0.1%	258	0.1%	0	0.0%											5,710
GBA SP	1,118	0.3%	909	0.4%	1,033	0.5%	739	0.3%	524	0.2%	544	0.2%	764	0.2%	398	0.1%	19,197
DS	889	0.3%	682	0.3%	383	0.2%	498	0.2%	323	0.1%	325	0.1%	489	0.1%	303	0.1%	9,793
PSP	42,226	12.8%	39,422	19.4%	30,308	13.3%	28,476	11.5%	28,717	10.3%	31,368	8.8%	37,745	10.1%	33,438	12.2%	862,875
GBM	1,121	0.3%	654	0.3%	656	0.3%	1,005	0.4%	624	0.2%	687	0.2%	694	0.2%	403	0.1%	20,792
Xbox 360	3,616	1.1%	3,774	1.9%	3,583	1.6%	3,354	1.4%	2,853	1.0%	3,530	1.0%	3,753	1.0%	2,369	0.9%	99,989
DS Lite	158,609	48.1%	83,218	40.9%	118,391	52.0%	124,038	50.2%	157,866	56.8%	219,331	61.2%	218,802	58.4%	160,009	58.5%	2,939,309
PS3	18,391	5.6%	17,289	8.5%	14,820	6.5%	13,539	5.5%	10,899	3.9%	14,700	4.1%	18,186	4.9%	8,962	3.3%	443,753
Wii	87,704	26.6%	40,798	20.1%	44,520	19.5%	62,361	25.3%	65,093	23.4%	74,950	20.9%	77,077	20.6%	55,724	20.4%	1,385,038
Total	329,418	100.0%	203,357	100.0%	227,861	100.0%	246,961	100.0%	278,061	100.0%	358,475	100.0%	374,843	100.0%	273,460	100.0%	



Comparison of Weekly Sales of PS2, GC, Xbox 360, PS3, and Wii

Units Sold	4th wk	1st wk / Feb	2nd wk	3rd wk	4th wk	1st wk / Mar	2nd wk	3rd wk	4th wk	1st wk / Apr	2nd wk	3rd wk	4th wk	5th wk	1st wk / May	2nd wk
PS2	18,826	17,877	16,083	16,513	15,966	15,389	13,221	12,901	15,434	16,353	14,167	12,951	11,162	13,040	17,333	11,854
GC	283	369	416	414	295	319	321	305	310	258	0					
Xbox 360	7,639	5,509	4,380	4,678	4,062	4,361	3,240	3,227	3,616	3,774	3,583	3,354	2,853	3,530	3,753	2,369
PS3	21,028	20,687	22,950	20,617	21,558	46,924	26,925	19,787	18,391	17,289	14,820	13,539	10,899	14,700	18,186	8,962
Wii	81,381	75,173	68,978	63,849	88,338	61,359	49,750	63,941	87,704	40,798	44,520	62,361	65,093	74,950	77,077	55,724

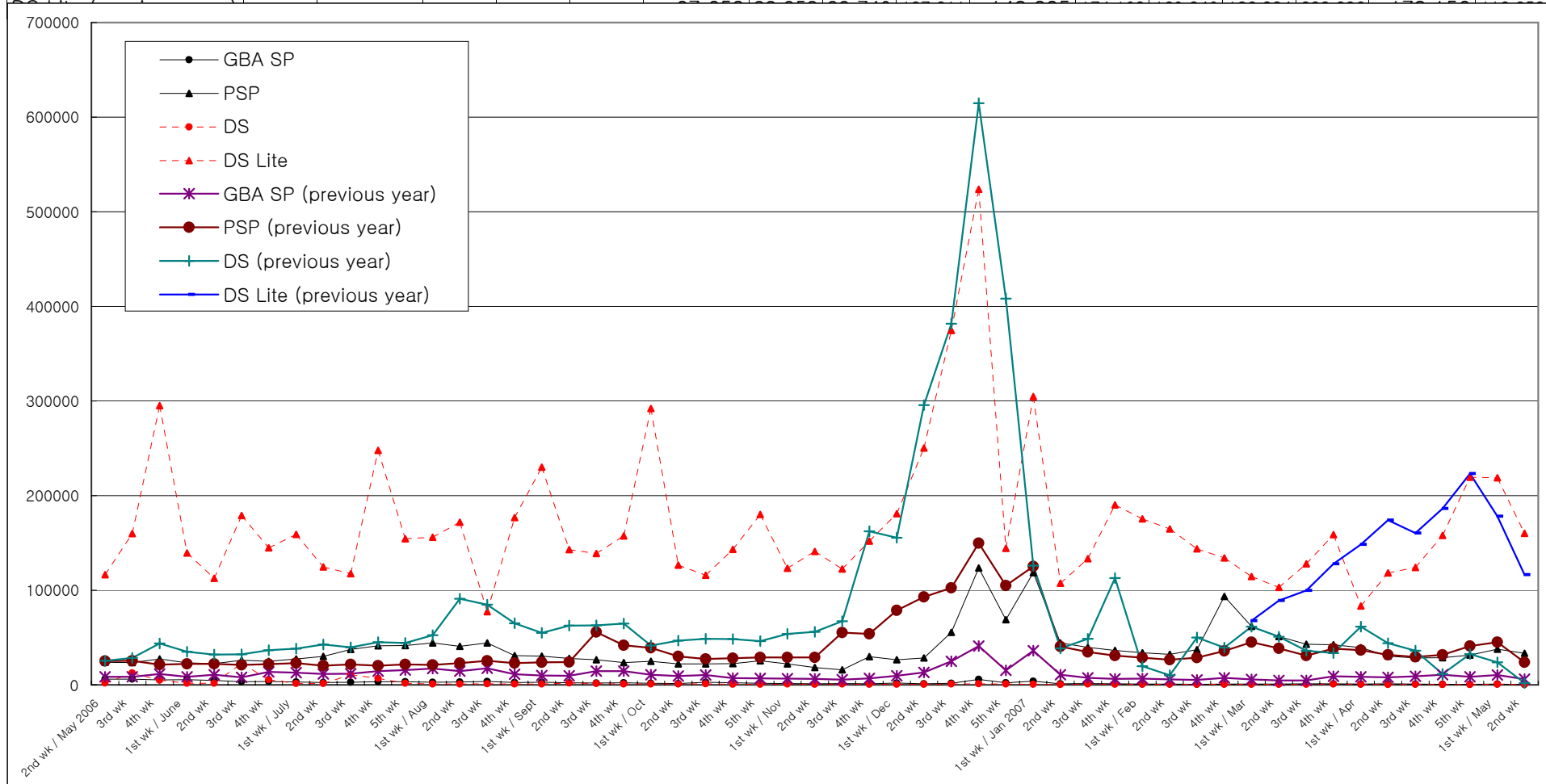
PS2 (previous year)	27,023	25,434	21,869	23,956	25,295	25,722	22,820	58,502	42,881	36,574	31,189	30,005	24,827	29,216	33,654	21,778
GC (previous year)	2,518	2,427	2,014	2,036	1,508	1,632	1,311	1,353	1,539	1,592	1,266	1,113	1,087	1,265	1,910	1,406
Xbox 360 (previous year)	2,095	2,022	1,463	1,212	1,082	1,020	1,035	1,181	1,550	2,636	1,752	1,780	2,852	2,742	2,021	1,496
PS3 (previous year)																
Wii (previous year)																



Comparison of Weekly Sales of GBA SP, PSP, DS and DS Lite

Units Sold	4th wk	1st wk / Feb	2nd wk	3rd wk	4th wk	1st wk / Mar	2nd wk	3rd wk	4th wk	1st wk / Apr	2nd wk	3rd wk	4th wk	5th wk	1st wk / May	2nd wk
GBA SP	1,101	919	708	667	789	711	753	1,003	1,118	909	1,033	739	524	544	764	398
PSP	36,354	34,005	32,142	37,202	93,523	61,858	50,970	42,762	42,226	39,422	30,308	28,476	28,717	31,368	37,745	33,438
DS	424	439	608	457	538	625	457	629	889	682	383	498	323	325	489	303
DS Lite	190,116	175,440	164,850	143,603	134,088	114,435	103,089	127,882	158,609	83,218	118,391	124,038	157,866	219,331	218,802	160,009

GBA SP (previous year)	6,228	6,539	5,869	5,191	7,334	5,652	4,622	4,725	8,922	8,394	7,817	8,926	10,589	8,581	10,308	6,125
PSP (previous year)	30,815	28,665	26,549	28,595	35,865	45,008	38,607	30,766	38,321	36,713	31,723	29,586	31,781	40,911	45,191	23,660
DS (previous year)	112,938	19,644	10,196	50,107	39,373	61,391	50,860	36,051	33,713	61,500	44,109	36,041	11,438	32,442	23,728	2,032

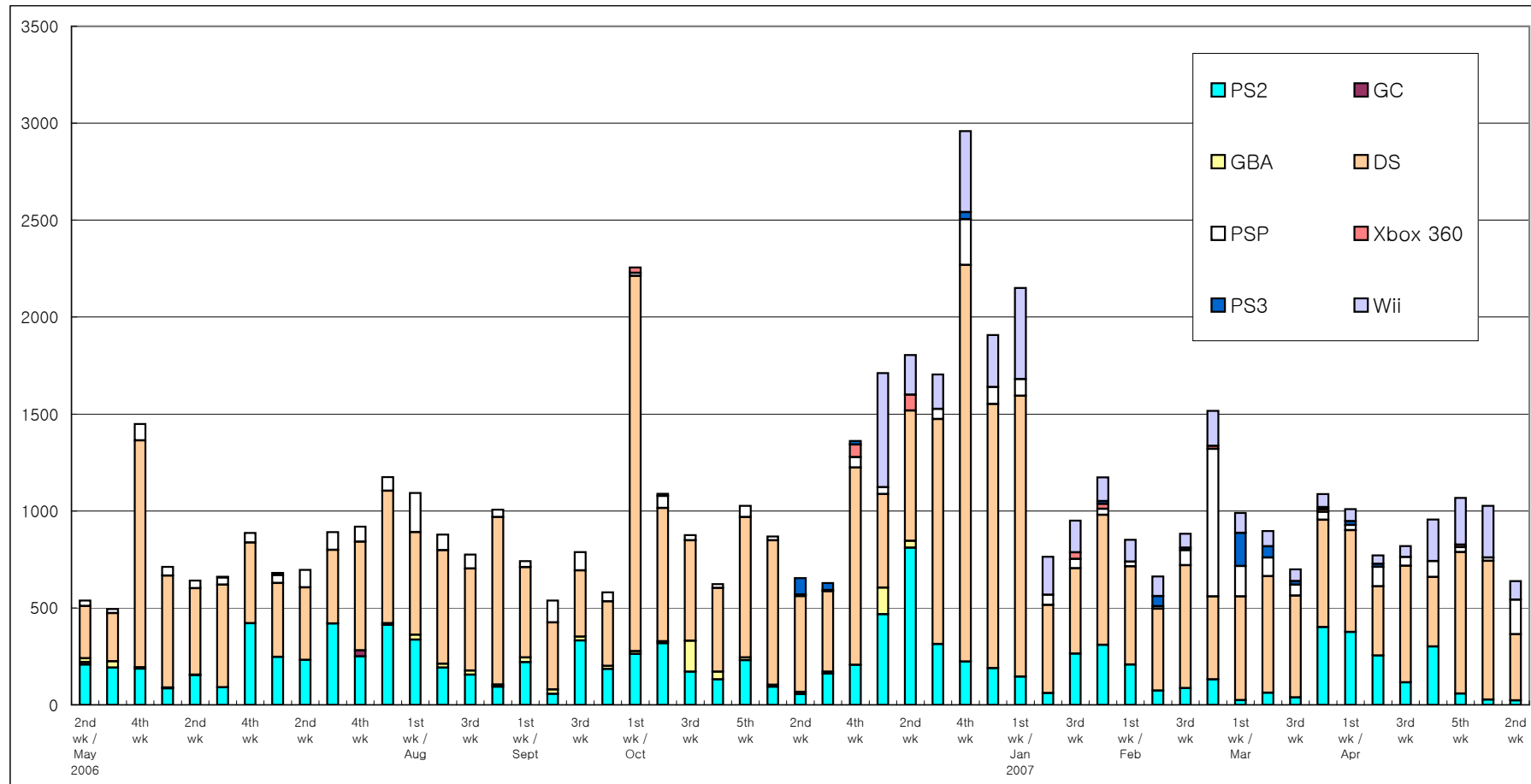


Software Sales/Share for Each Platform

*Only covering titles ranked in the TOP 30

Unit: K = 1000

	3/19-3/25		3/26-4/1		4/2-4/8		4/9-4/15		4/16-4/22		4/23-4/29		4/30-5/6		5/7-5/13		2007 to Date
	Copies Sold	Share	Copies Sold	Share	Copies Sold	Share	Copies Sold	Share	Copies Sold	Share	Copies Sold	Share	Copies Sold	Share	Copies Sold	Share	
PS2	401.3	36.9%	375.6	37.2%	253.9	32.9%	115.8	14.1%	300.4	31.4%	58.3	5.5%	27.0	2.6%	22.7	3.6%	2,956.8
GC	0.0	0.0%	0.0	0.0%	0.0	0.0%	0.0	0.0%	0.0	0.0%	0.0	0.0%	0.0	0.0%	0.0	0.0%	0.0
GBA	0.0	0.0%	0.0	0.0%	0.0	0.0%	0.0	0.0%	0.0	0.0%	0.0	0.0%	0.0	0.0%	0.0	0.0%	0.0
DS	552.7	50.8%	525.5	52.0%	358.1	46.4%	601.0	73.4%	359.4	37.6%	730.2	68.4%	716.3	69.8%	342.3	53.7%	10,853.6
PSP	41.4	3.8%	27.0	2.7%	100.1	13.0%	45.4	5.5%	81.0	8.5%	24.5	2.3%	16.4	1.6%	176.6	27.7%	1,911.4
Xbox 360	12.7	1.2%	0.0	0.0%	0.0	0.0%	0.0	0.0%	0.0	0.0%	12.4	1.2%	0.0	0.0%	0.0	0.0%	99.2
PS3	11.4	1.0%	18.6	1.8%	15.1	2.0%	0.0	0.0%	0.0	0.0%	0.0	0.0%	0.0	0.0%	0.0	0.0%	374.2
Wii	67.9	6.2%	63.3	6.3%	44.4	5.8%	56.5	6.9%	215.3	22.5%	241.4	22.6%	267.1	26.0%	96.1	15.1%	2,714.2
Total	1,087.4	100.0%	1,010.0	100.0%	771.5	100.0%	818.7	100.0%	956.2	100.0%	1,066.8	100.0%	1,026.9	100.0%	637.7	100.0%	



Market Scale Transition

Unit: 100 million yen	4th wk	1st wk / Feb	2nd wk	3rd wk	4th wk	1st wk / Mar	2nd wk	3rd wk	4th wk	1st wk / Apr	2nd wk	3rd wk	4th wk	5th wk	1st wk / May	2nd wk	2007 to Date
Hardware	70.9	65.8	63.0	58.4	74.4	72.4	54.2	55.7	65.5	42.4	45.1	48.7	52.6	68.1	71.7	50.7	1,249.9
Software	89.8	63.8	52.3	62.0	103.9	72.2	62.8	51.9	80.9	78.7	60.0	57.7	69.3	75.3	75.7	44.0	1,378.3
Total	160.7	129.6	115.3	120.4	178.3	144.6	117.0	107.6	146.4	121.0	105.1	106.4	121.9	143.4	147.4	94.7	2,628.2

Hardware (previous year)	29.5	15.9	13.1	19.2	19.7	34.9	34.6	40.5	43.2	48.6	47.6	43.7	45.7	55.7	49.3	28.8
Software (previous year)	98.6	52.7	38.9	58.5	81.2	74.9	43.9	184.2	78.6	76.2	51.6	39.3	60.5	87.3	60.0	36.7
Total (previous year)	128.1	68.6	52.0	77.7	100.9	109.9	78.6	224.6	121.8	124.9	99.2	83.0	106.2	143.0	109.3	65.6

