

Famitsu Marketing Data Service

Data Collected by Famitsu: from 9 to 15. April, 2007

Software Sales Ranking: TOP 30

Hardware Sales/Share

Hardware Sales: Comparison of Weekly Sales with Previous Year's

Software Sales/Share for Each Platform

Market Size: Comparison of Scale Transition with Previous Year's

Software Sales Ranking: TOP 30

Note 1: Based on two different data, quantity of stock numbers may have a margin of error.

Note 2: In addition to game shops, titles listed in colored lines are also available at five convenience-store chains. K = 1000

This Week	Last Week	Week Before Last	Platform	Title	Publisher	Sales Date	Price (incl. tax)	Genre	Copies Sold/wk (Estimated)	Copies Shipped (Estimated)	Cumulative Copies Sold (Estimated)	Sales-Stock Ratio	Copies in Stock
1	NEW	-	DS	Gyakuten Saiban 4	CAPCOM	04-12-07	¥5,040.00	Adv	240,275	406,014	240,275	59.2%	165.7K
2	NEW	-	DS	Mario vs. Donkey Kong 2: MiniMini Daikoshin! Mario vs. Donkey Kong 2: March of the	Nintendo	04-12-07	¥4,800.00	Act	83,517	173,876	83,517	48.0%	90.4K
3	5	9	DS	Yoshi Island DS Yoshi's Island DS	Nintendo	03-08-07	¥4,800.00	Act	45,315	682,749	582,674	85.3%	100.1-107K
4	10	11	Wii	Wii Sports	Nintendo	12-02-06	¥4,800.00	Act	35,065	1,363,017	1,313,488	96.4%	49.5-64K
5	7	4	DS	Eigo ga Nigate na Otona no DS Training Motto Eigo-zuke	Nintendo	03-29-07	¥3,800.00	Other	28,288	300,444	116,516	38.8%	52.8-183.9K
6	3	2	PS2	Musou Orochi Orochi Warriors	KOEI	03-21-07	¥7,140.00	Act	25,299	587,685	567,852	96.6%	12.6-19.8K
7	4	7	PS2	Pro Yakyu Spirits 4	KONAMI	04-01-07	¥7,329.00	Act	24,362	129,217	112,661	87.2%	14.4-16.6K
8	8	6	DS	Layton Kyoju to Fushigi na Machi	LEVEL-5	02-15-07	¥4,800.00	Adv	23,528	490,545	448,663	91.5%	36.1-41.9K
9	1	-	PS2	Naruto: Shippu-den Narutimate Accel	NAMCO BANDAI Games	04-05-07	¥7,140.00	Act	21,503	115,678	96,902	83.8%	14.1-18.8K
10	19	16	Wii	Hajimete no Wii Wii Play	Nintendo	12-02-06	¥4,800.00	Other	21,483	1,124,603	1,076,683	95.7%	47.9-53.7K
11	11	13	DS	New Super Mario Bros.	Nintendo	05-25-06	¥4,800.00	Act	21,181	4,382,317	4,351,018	99.3%	31.3-44K
12	2	-	PSP	Kido Senshi Gundam Seed: Rengo vs. Z.A.F.T. Portable	NAMCO BANDAI Games	04-05-07	¥5,040.00	Act	20,454	135,546	76,892	56.7%	28.5-58.7K
13	14	14	DS	Pocket Monster Diamond/Pearl	Pokemon	09-28-06	¥4,800.00	RPG	18,874	5,112,945	5,015,388	98.1%	97.6-116.5K
14	6	1	PS2	Kingdom Hearts II: Final Mix +	SQUARE ENIX	03-29-07	¥7,980.00	Act/RPG	18,054	348,286	240,041	68.9%	76.1-108.2K

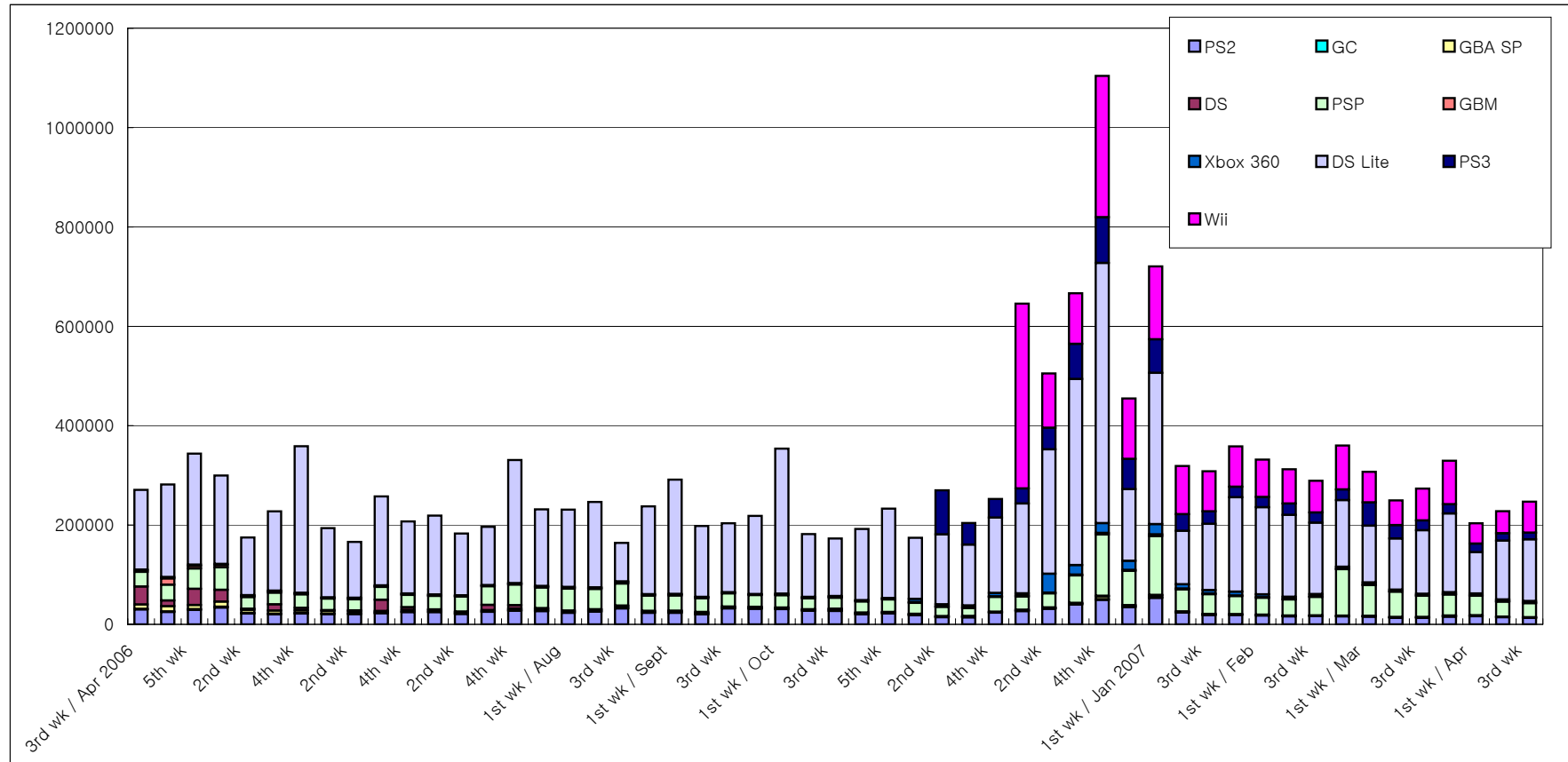
15	20	18	DS	Tohoku Daigaku Mirai-Kagaku-Gijutsu-Kyodo-Kenkyu-Center Kawashima Ryuta Kyoju Kanshu: Motto Nou wo Kitaeru Otona no DS Training	Nintendo	12-29-05	¥2,800.00	Other	16,307	4,251,952	4,225,415	99.4%	26.5-41K
16	13	5	DS	Kotoba no Puzzle Mojipittan DS	NAMCO BANDAI Games	03-15-07	¥2,940.00	Pzl	15,855	258,934	222,124	85.8%	36.8-50.1K
17	NEW	-	DS	Watashi no Relakkuma	Rocket Company	04-12-07	¥5,040.00	Other	14,994	37,616	14,994	39.9%	22.6K
18	NEW	-	PS2	Grim Grimoire	NIPPON ICHI SOFTWARE	04-12-07	¥7,140.00	Sim	14,865	30,127	14,865	49.3%	15.3K
19	12	3	DS	Digimon Story: Sunburst/Moonlight Digimon World: Dawn/Dusk	NAMCO BANDAI Games	03-29-07	¥5,040.00	RPG	13,777	184,840	111,792	60.5%	29.8-73K
20	9	-	PSP	Jikkyo Powerful Pro Yakyu Portable 2	KONAMI	04-05-07	¥5,229.00	Act	13,365	86,467	40,578	46.9%	20.3-45.9K
21	23	24	DS	Mario Kart DS	Nintendo	12-08-05	¥4,800.00	Act	11,933	2,081,513	2,067,025	99.3%	14.5-26K
22	15	-	PS2	Pro Yakyu NetsuSta 2007	NAMCO BANDAI Games	04-05-07	¥7,140.00	Act	11,688	73,765	33,407	45.3%	19-40.4K
23	21	12	PSP	Monster Hunter Portable 2nd Monster Hunter Freedom 2	CAPCOM	02-22-07	¥5,229.00	Act	11,550	1,162,837	1,150,188	98.9%	12.6-19.1K
24	24	27	DS	Oide yo Dobutsu no Mori Animal Crossing: Wild World	Nintendo	11-23-05	¥4,800.00	Other	10,919	4,044,686	4,017,298	99.3%	27.4-36.3K
25	16	8	DS	Tamagotchi no Appare! Niji-Venture Tamagotchi Connection: Corner Shop 3	NAMCO BANDAI Games	03-29-07	¥5,040.00	RPG	10,589	171,347	67,907	39.6%	27.4-103.4K
26	25	25	DS	Kanshu Nihon Joshiki-ryoku Kentei Kyokai: Imasara Hito ni wa Kikenai Otona no Joshiki-ryoku Training DS	Nintendo	10-26-06	¥3,800.00	Other	10,573	1,365,851	1,338,663	98.0%	27.2-37.1K
27	30	-	DS	DS Kageyama-Method: Dennou Hanpuku Tadashii Kanji Kakitori-kun	Shogakukan	04-05-07	¥3,600.00	Other	9,748	68,494	20,172	29.5%	37.7-48.3K
28	27	21	DS	Dragon Quest Monsters: Joker	SQUARE ENIX	12-28-06	¥5,040.00	RPG	8,849	1,372,681	1,325,887	96.6%	46.8-48.1K
29	17	-	DS	Meitantei Conan: Tantei-ryoku Trainer	NAMCO BANDAI Games	04-05-07	¥5,040.00	Other	8,644	48,335	27,155	56.2%	21.2-23.3K
30	26	15	DS	Dragon Ball Z: Harukanaru Goku Densetsu Dragon Ball Z: Harukanaru Densetsu	NAMCO BANDAI Games	03-21-07	¥5,040.00	RPG	7,879	140,626	103,852	73.8%	30.7-36.8K

Other New Titles

Platform	Title	Publisher	Sales Date	Price (incl. tax)	Genre	Copies Sold/wk (Estimated)	Sales-Stock Ratio	Copies Shipped (Estimated)	Copies in Stock
PS2	Splinter Cell: Niju-Spy Tom Clancy's Splinter Cell Double Agent	Ubisoft	04-12-07	¥7,140.00	Act	2,963	32.5%	9,112	6.1K
PS2	Simple 2000 Series Vol. 116: The Neko-mura no Hitobito - Pug Daikan no Akugyo Zanmai	D3 PUBLISHER	04-12-07	¥2,100.00	Act/Adv	1,638	21.8%	7,503	5.9K
DS	Little Mermaid: Ariel no Umi no Takaramono Disney's The Little Mermaid: Ariel's Undersea Adventure	Disney Interactive Studio	04-12-07	¥5,040.00	Adv	1,228	13.3%	9,229	8.K
DS	Kakikomi-shiki "Hannya Shingyo" Renshu-cho DS	IE Institute	04-12-07	¥3,990.00	Other	1,068	16.6%	6,453	5.4K
DS	Taitsu-kun: Joshi ga Okori nikui Sawayaka Manner	SUCCESS	04-12-07	¥3,990.00	Other	940	8.0%	11,795	10.9K

Hardware Sales/Share

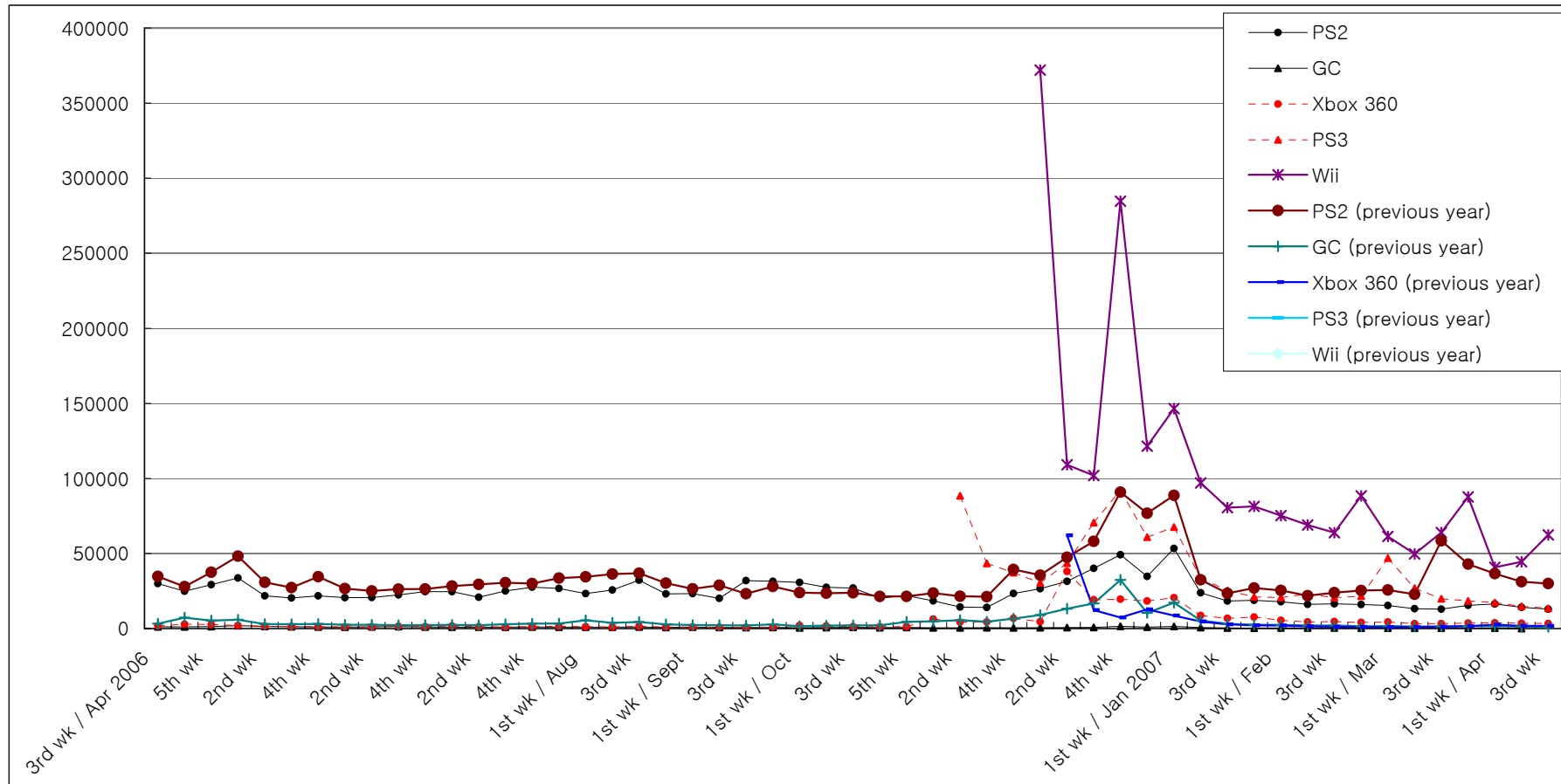
	2/19-2/25		2/26-3/4		3/5-3/11		3/12-3/18		3/19-3/25		3/26-4/1		4/2-4/8		4/9-4/15		2007 to Date
	Units Sold	Share	Units Sold	Share	Units Sold	Share	Units Sold	Share	Units Sold	Share	Units Sold	Share	Units Sold	Share	Units Sold	Share	
PS2	15,966	4.4%	15,389	5.0%	13,221	5.3%	12,901	4.7%	15,434	4.7%	16,353	8.0%	14,167	6.2%	12,951	5.2%	281,117
GC	295	0.1%	319	0.1%	321	0.1%	305	0.1%	310	0.1%	258	0.1%	0	0.0%	0	0.0%	5,710
GBA SP	789	0.2%	711	0.2%	753	0.3%	1,003	0.4%	1,118	0.3%	909	0.4%	1,033	0.5%	739	0.3%	16,967
DS	538	0.1%	625	0.2%	457	0.2%	629	0.2%	889	0.3%	682	0.3%	383	0.2%	498	0.2%	8,353
PSP	93,523	26.0%	61,858	20.1%	50,970	20.4%	42,762	15.7%	42,226	12.8%	39,422	19.4%	30,308	13.3%	28,476	11.5%	731,607
GBM	877	0.2%	1,041	0.3%	803	0.3%	798	0.3%	1,121	0.3%	654	0.3%	656	0.3%	1,005	0.4%	18,384
Xbox 360	4,062	1.1%	4,361	1.4%	3,240	1.3%	3,227	1.2%	3,616	1.1%	3,774	1.9%	3,583	1.6%	3,354	1.4%	87,484
DS Lite	134,088	37.2%	114,435	37.3%	103,089	41.3%	127,882	46.8%	158,609	48.1%	83,218	40.9%	118,391	52.0%	124,038	50.2%	2,183,301
PS3	21,558	6.0%	46,924	15.3%	26,925	10.8%	19,787	7.2%	18,391	5.6%	17,289	8.5%	14,820	6.5%	13,539	5.5%	391,006
Wii	88,338	24.5%	61,359	20.0%	49,750	19.9%	63,941	23.4%	87,704	26.6%	40,798	20.1%	44,520	19.5%	62,361	25.3%	1,112,194
Total	360,034	100.0%	307,022	100.0%	249,529	100.0%	273,235	100.0%	329,418	100.0%	203,357	100.0%	227,861	100.0%	246,961	100.0%	



Comparison of Weekly Sales of PS2, GC, Xbox 360, PS3, and Wii

Units Sold	5th wk	1st wk / Jan 2007	2nd wk	3rd wk	4th wk	1st wk / Feb	2nd wk	3rd wk	4th wk	1st wk / Mar	2nd wk	3rd wk	4th wk	1st wk / Apr	2nd wk	3rd wk
PS2	34,715	53,299	23,815	18,322	18,826	17,877	16,083	16,513	15,966	15,389	13,221	12,901	15,434	16,353	14,167	12,951
GC	909	1,357	657	406	283	369	416	414	295	319	321	305	310	258	0	
Xbox 360	18,373	20,586	8,666	6,809	7,639	5,509	4,380	4,678	4,062	4,361	3,240	3,227	3,616	3,774	3,583	3,354
PS3	60,891	67,620	33,492	25,379	21,028	20,687	22,950	20,617	21,558	46,924	26,925	19,787	18,391	17,289	14,820	13,539
Wii	121,510	146,553	96,975	80,514	81,381	75,173	68,978	63,849	88,338	61,359	49,750	63,941	87,704	40,798	44,520	62,361

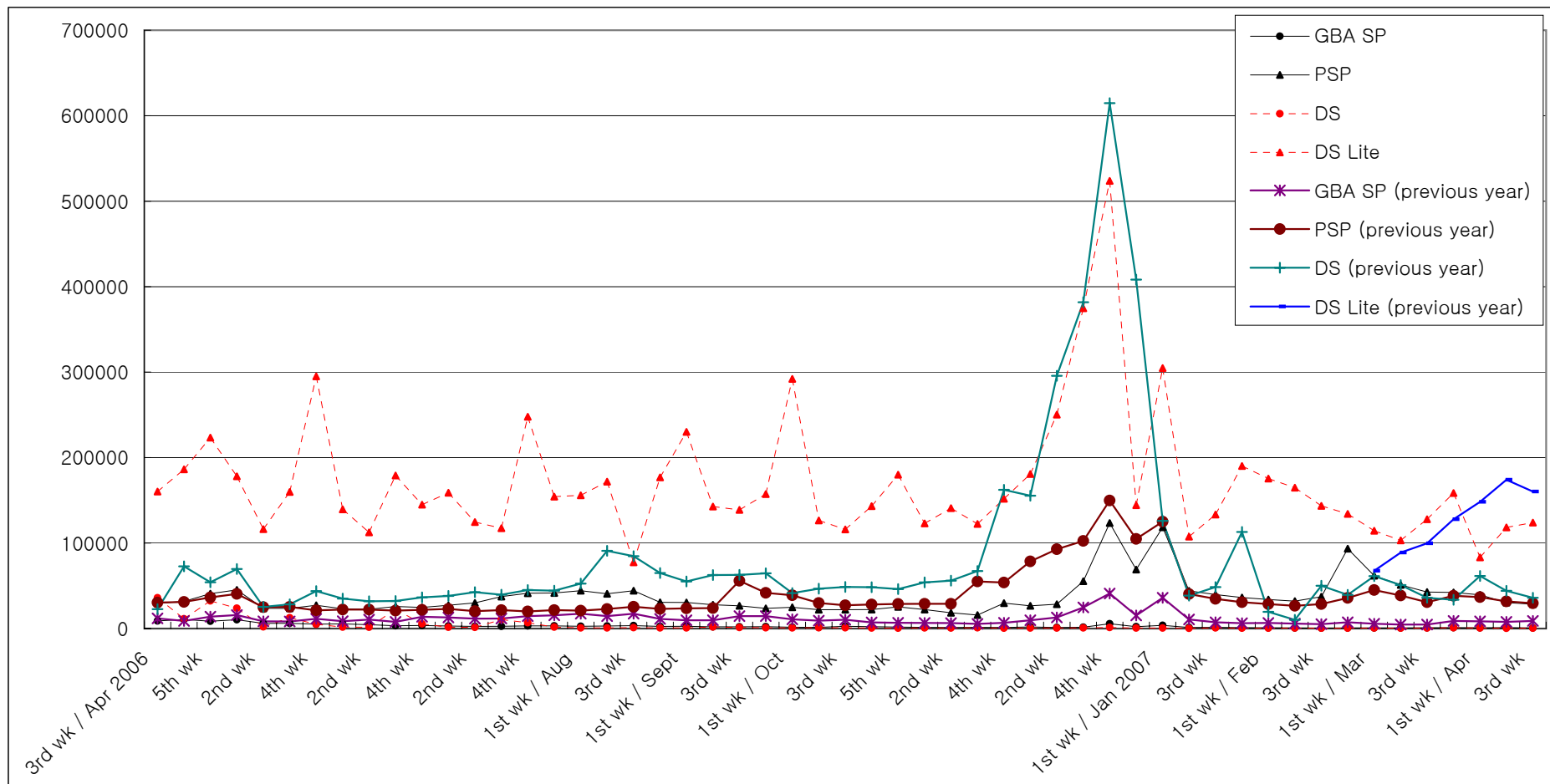
PS2 (previous year)	76,801	88,680	32,514	23,427	27,023	25,434	21,869	23,956	25,295	25,722	22,820	58,502	42,881	36,574	31,189	30,005
GC (previous year)	10,380	17,227	5,356	3,178	2,518	2,427	2,014	2,036	1,508	1,632	1,311	1,353	1,539	1,592	1,266	1,113
Xbox 360 (previous year)	12,755	8,655	4,620	2,762	2,095	2,022	1,463	1,212	1,082	1,020	1,035	1,181	1,550	2,636	1,752	1,780
PS3 (previous year)																
Wii (previous year)																



Comparison of Weekly Sales of GBA SP, PSP, DS and DS Lite

Units Sold	5th wk	1st wk / Jan 2007	2nd wk	3rd wk	4th wk	1st wk / Feb	2nd wk	3rd wk	4th wk	1st wk / Mar	2nd wk	3rd wk	4th wk	1st wk / Apr	2nd wk	3rd wk
GBA SP	2,234	3,833	1,228	1,456	1,101	919	708	667	789	711	753	1,003	1,118	909	1,033	739
PSP	68,981	118,479	44,173	39,707	36,354	34,005	32,142	37,202	93,523	61,858	50,970	42,762	42,226	39,422	30,308	28,476
DS	695	629	389	706	424	439	608	457	538	625	457	629	889	682	383	498
DS Lite	144,251	304,692	107,503	133,347	190,116	175,440	164,850	143,603	134,088	114,435	103,089	127,882	158,609	83,218	118,391	124,038

GBA SP (previous year)	15,272	35,951	10,658	7,430	6,228	6,539	5,869	5,191	7,334	5,652	4,622	4,725	8,922	8,394	7,817	8,926
PSP (previous year)	104,922	125,095	40,425	34,820	30,815	28,665	26,549	28,595	35,865	45,008	38,607	30,766	38,321	36,713	31,723	29,586
DS (previous year)	408,195	125,957	38,524	48,564	112,938	19,644	10,196	50,107	39,373	61,391	50,860	36,051	33,713	61,500	44,109	36,041
DS Lite (previous year)										67,653	88,958	99,740	127,911	148,295	174,102	160,340

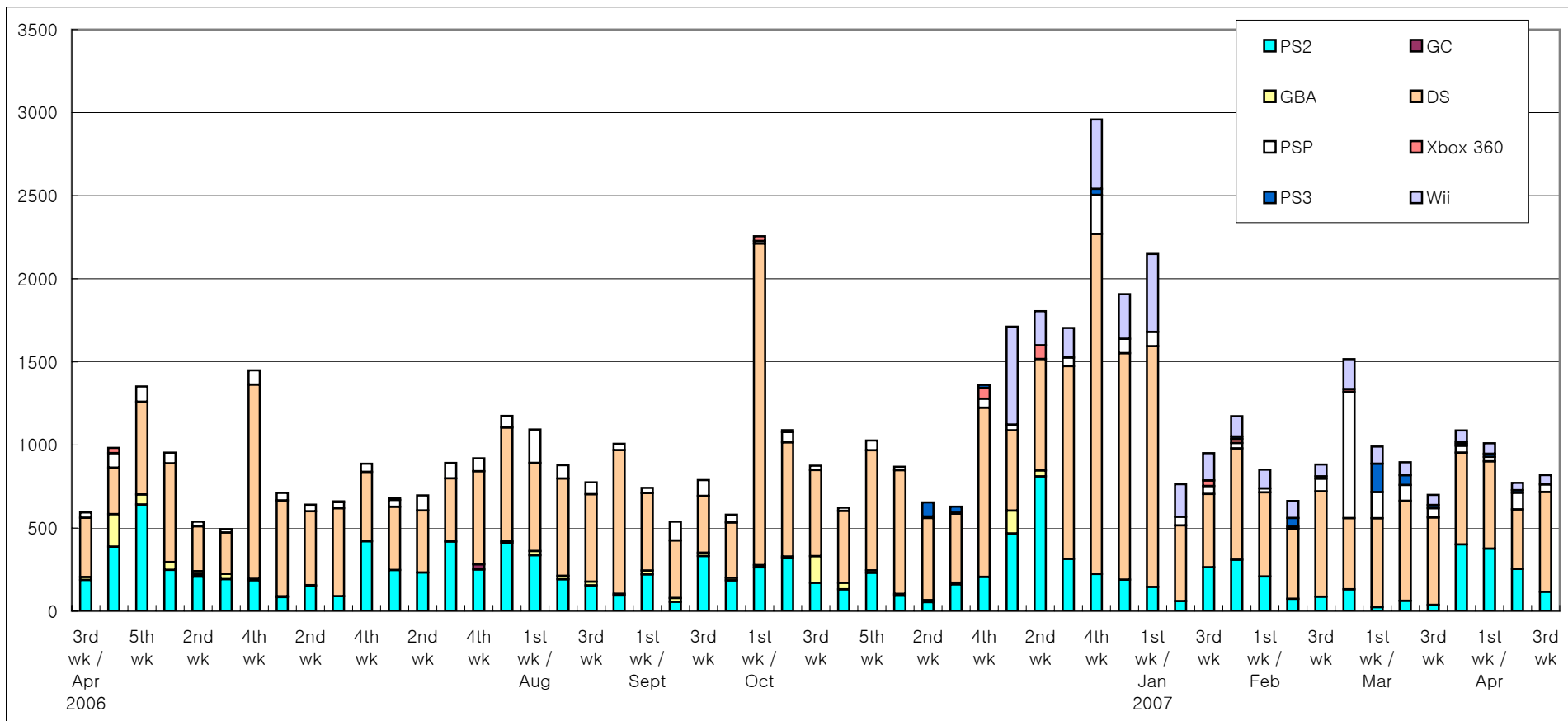


Software Sales/Share for Each Platform

*Only covering titles ranked in the TOP 30

Unit: K = 1000

	2/19-2/25		2/26-3/4		3/5-3/11		3/12-3/18		3/19-3/25		3/26-4/1		4/2-4/8		4/9-4/15		2007 to Date
	Copies Sold	Share	Copies Sold	Share	Copies Sold	Share	Copies Sold	Share	Copies Sold	Share	Copies Sold	Share	Copies Sold	Share	Copies Sold	Share	
PS2	131.0	8.6%	23.7	2.4%	62.1	6.9%	37.7	5.4%	401.3	36.9%	375.6	37.2%	253.9	32.9%	115.8	14.1%	2,548.4
GC	0.0	0.0%	0.0	0.0%	0.0	0.0%	0.0	0.0%	0.0	0.0%	0.0	0.0%	0.0	0.0%	0.0	0.0%	0.0
GBA	0.0	0.0%	0.0	0.0%	0.0	0.0%	0.0	0.0%	0.0	0.0%	0.0	0.0%	0.0	0.0%	0.0	0.0%	0.0
DS	428.1	28.2%	535.3	54.1%	601.9	67.2%	525.8	75.2%	552.7	50.8%	525.5	52.0%	358.1	46.4%	601.0	73.4%	8,705.4
PSP	761.2	50.2%	156.7	15.8%	95.2	10.6%	55.6	7.9%	41.4	3.8%	27.0	2.7%	100.1	13.0%	45.4	5.5%	1,612.9
Xbox 360	15.3	1.0%	0.0	0.0%	0.0	0.0%	0.0	0.0%	12.7	1.2%	0.0	0.0%	0.0	0.0%	0.0	0.0%	86.7
PS3	0.0	0.0%	171.0	17.3%	58.6	6.5%	19.2	2.7%	11.4	1.0%	18.6	1.8%	15.1	2.0%	0.0	0.0%	374.2
Wii	180.5	11.9%	103.4	10.4%	78.2	8.7%	61.1	8.7%	67.9	6.2%	63.3	6.3%	44.4	5.8%	56.5	6.9%	1,894.3
Total	1,516.1	100.0%	990.1	100.0%	896.0	100.0%	699.5	100.0%	1,087.4	100.0%	1,010.0	100.0%	771.5	100.0%	818.7	100.0%	



Market Scale Transition

Unit: 100 million yen	5th wk	1st wk / Jan 2007	2nd wk	3rd wk	4th wk	1st wk / Feb	2nd wk	3rd wk	4th wk	1st wk / Mar	2nd wk	3rd wk	4th wk	1st wk / Apr	2nd wk	3rd wk	2007 to Date
Hardware	106.6	153.5	71.4	64.9	70.9	65.8	63.0	58.4	74.4	72.4	54.2	55.7	65.5	42.4	45.1	48.7	1,006.3
Software	128.2	149.3	58.2	70.6	89.8	63.8	52.3	62.0	103.9	72.2	62.8	51.9	80.9	78.7	60.0	57.7	1,114.0
Total	234.9	302.7	129.5	135.5	160.7	129.6	115.3	120.4	178.3	144.6	117.0	107.6	146.4	121.0	105.1	106.4	2,120.3

Hardware (previous year)	102.2	72.2	24.6	21.6	29.5	15.9	13.1	19.2	19.7	34.9	34.6	40.5	43.2	48.6	47.6	43.7
Software (previous year)	130.8	115.1	51.5	44.6	98.6	52.7	38.9	58.5	81.2	74.9	43.9	184.2	78.6	76.2	51.6	39.3
Total (previous year)	233.0	187.3	76.1	66.3	128.1	68.6	52.0	77.7	100.9	109.9	78.6	224.6	121.8	124.9	99.2	83.0

