

# *Famitsu Marketing Data Service*

Data Collected by Famitsu: from March 12 to March 18, 2007

Software Sales Ranking: TOP 30

Hardware Sales/Share

Hardware Sales: Comparison of Weekly Sales with Previous Year's

Software Sales/Share for Each Platform

Market Size: Comparison of Scale Transition with Previous Year's

## Software Sales Ranking: TOP 30

Note 1: Based on two different data, quantity of stock numbers may have a margin of error.

Note 2: In addition to game shops, titles listed in colored lines are also available at five convenience-store chain K = 1000

This Week	Last Week	Week Before Last	Platform	Title	Publisher	Sales Date	Price (incl. tax)	Genre	Copies Sold/wk (Estimated)	Copies Shipped (Estimated)	Cumulative Copies Sold (Estimated)	Sales-Stock Ratio	Copies in Stock
1	1	-	DS	Yoshi Island DS Yoshi's Island DS	Nintendo	03-08-07	\ 4,800	Act	114,946	417,741	369,469	88.4%	48.3-69.6K
2	NEW	-	DS	Kotoba no Puzzle MojiPittan DS	NAMCO BANDAI Games	03-15-07	\ 2,940	Pzl	78,222	187,942	78,222	41.6%	109.7K
3	2	3	PSP	Monster Hunter Portable 2nd Monster Hunter Freedom 2	CAPCOM	02-22-07	\ 5,229	Act	55,590	1,070,584	1,053,791	98.4%	16.8-58.8K
4	5	4	DS	Layton Kyoju to Fushigi na Machi	LEVEL-5	02-15-07	\ 4,800	Adv	44,431	339,024	297,876	87.9%	41.1-44.5K
5	8	5	Wii	Wii Sports	Nintendo	12-02-06	\ 4,800	Act	29,710	1,228,851	1,185,181	96.4%	43.7-56.9K
6	9	6	DS	Pocket Monster Diamond/Pearl	Pokemon	09-28-06	\ 4,800	RPG	24,119	5,061,134	4,922,421	97.3%	8.7-213.5K
7	10	7	DS	New Super Mario Bros.	Nintendo	05-25-06	\ 4,800	Act	23,196	4,287,483	4,249,418	99.1%	38.1-48.6K
8	11	9	Wii	Hajimete no Wii Wii Play	Nintendo	12-02-06	\ 4,800	Other	22,056	1,019,802	989,216	97.0%	30.6-49.3K
9	12	10	DS	Tohoku Daigaku Mirai-Kagaku-Gijutsu-Kyodo-Kenkyu-Center Kawashima Ryuta Kyoju Kanshu: Motto Nou wo Kitaeru Otona no DS Training	Nintendo	12-29-05	\ 2,800	Other	21,506	4,177,049	4,148,915	99.3%	28.1-51.9K
10	NEW	-	PS2	Kiniro no Corda 2	KOEI	03-15-07	\ 7,140	Sim	21,480	32,119	21,480	66.9%	10.6K
11	4	1	DS	Super Robot Taisen W	BANPRESTO	03-01-07	\ 6,090	Sim/RPG	19,887	263,662	237,484	90.1%	26.2-47.7K
12	7	8	DS	Dragon Quest Monsters: Joker	SQUARE ENIX	12-28-06	\ 5,040	RPG	19,646	1,339,727	1,267,402	94.6%	72.3-73.1K
13	3	2	PS3	Gundam Musou	NAMCO BANDAI Games	03-01-07	\ 7,800	Act	19,227	256,072	237,396	92.7%	18.7-41.9K
14	14	11	DS	Kanshu Nihon Joshiki-ryoku Kentei Kyokai: Imasara Hito ni wa Kikenai Otona no Joshiki-ryoku Training DS	Nintendo	10-26-06	\ 3,800	Other	18,040	1,323,637	1,283,192	96.9%	40.4-46.6K

15	NEW	-	DS	Yu-Gi-Oh! Duel Monsters World Championship 2007	KONAMI	03-15-07	\ 5,229	Card	18,025	33,458	18,025	53.9%	15.4K
16	NEW	-	DS	Tokimeki Memorial Girl's Side: 1st Love	KONAMI	03-15-07	\ 5,229	Sim	17,536	28,712	17,536	61.1%	11.2K
17	6	-	PS2	Kenka Bancho 2: Full Throttle	Spike	03-08-07	\ 7,140	Act/Adv	16,215	87,576	59,302	67.7%	12.5-28.3K
18	-	25	DS	SimCity DS	Electronic Arts	02-22-07	\ 4,980	Sim	14,185	85,224	76,808	90.1%	8.4-8.8K
19	16	15	DS	Oide yo Dobutsu no Mori Animal Crossing: Wild World	Nintendo	11-23-05	\ 4,800	Other	13,006	3,993,838	3,964,103	99.3%	29.7-36.5K
20	15	13	DS	Unou no Tatsujin: Sokai! Machigai Museum 2	NAMCO BANDAI Games	03-01-07	\ 3,990	Act	12,471	70,135	47,293	67.4%	22.8-29.2K
21	NEW	-	DS	Survival Kids: Lost in Blue 2 Lost in Blue 2	KONAMI	03-15-07	\ 5,229	Sim	12,040	30,434	12,040	39.6%	18.4K
22	18	18	DS	Mario Kart DS	Nintendo	12-08-05	\ 4,800	Act	11,854	2,037,042	2,010,377	98.7%	26.7-28K
23	24	22	DS	Tohoku Daigaku Mirai-Kagaku-Gijutsu-Kyodo-Kenkyu-Center Kawashima Ryuta Kyoju Kanshu: Nou wo Kitaeru Otona no DS Training Brain Age: Train Your Brain in Minutes a Day	Nintendo	05-19-05	\ 2,800	Other	10,730	3,221,818	3,186,571	98.9%	35.2-41.7K
24	NEW	-	Wii	Sonic to Himitsu no Ring Sonic and the Secret Rings	SEGA	03-15-07	\ 7,329	Act	9,353	27,383	9,353	34.2%	18K
25	13	-	DS	Seiken Densetsu: Heroes of Mana	SQUARE ENIX	03-08-07	\ 5,040	Sim/RPG	9,108	100,628	29,327	29.1%	59.1-71.3K
26	29	28	DS	Nounai Esthe IQ Supple DS	Spike	12-21-06	\ 3,990	Mix	9,100	188,739	162,930	86.3%	10.7-25.8K
27	17	-	DS	Doraemon: Nobita no Shin Makai Daiboken DS	SEGA	03-08-07	\ 5,040	Card	8,995	57,917	22,447	38.8%	20.3-35.5K
28	-	30	DS	Eigo ga Nigate na Otona no DS Training Eigo-zuke	Nintendo	01-26-06	\ 3,800	Other	8,302	1,706,569	1,692,869	99.2%	13.7-23K
29	22	16	DS	Bokujo Monogatari: Kimi to Sodatsu Shima	Marvelous Interactive	02-01-07	\ 5,040	Sim	8,269	196,835	177,964	90.4%	15-18.9K
30	19	14	DS	Picross DS	Nintendo	01-25-07	\ 3,800	Pzl	8,232	246,728	213,980	86.7%	32.7-37.6K

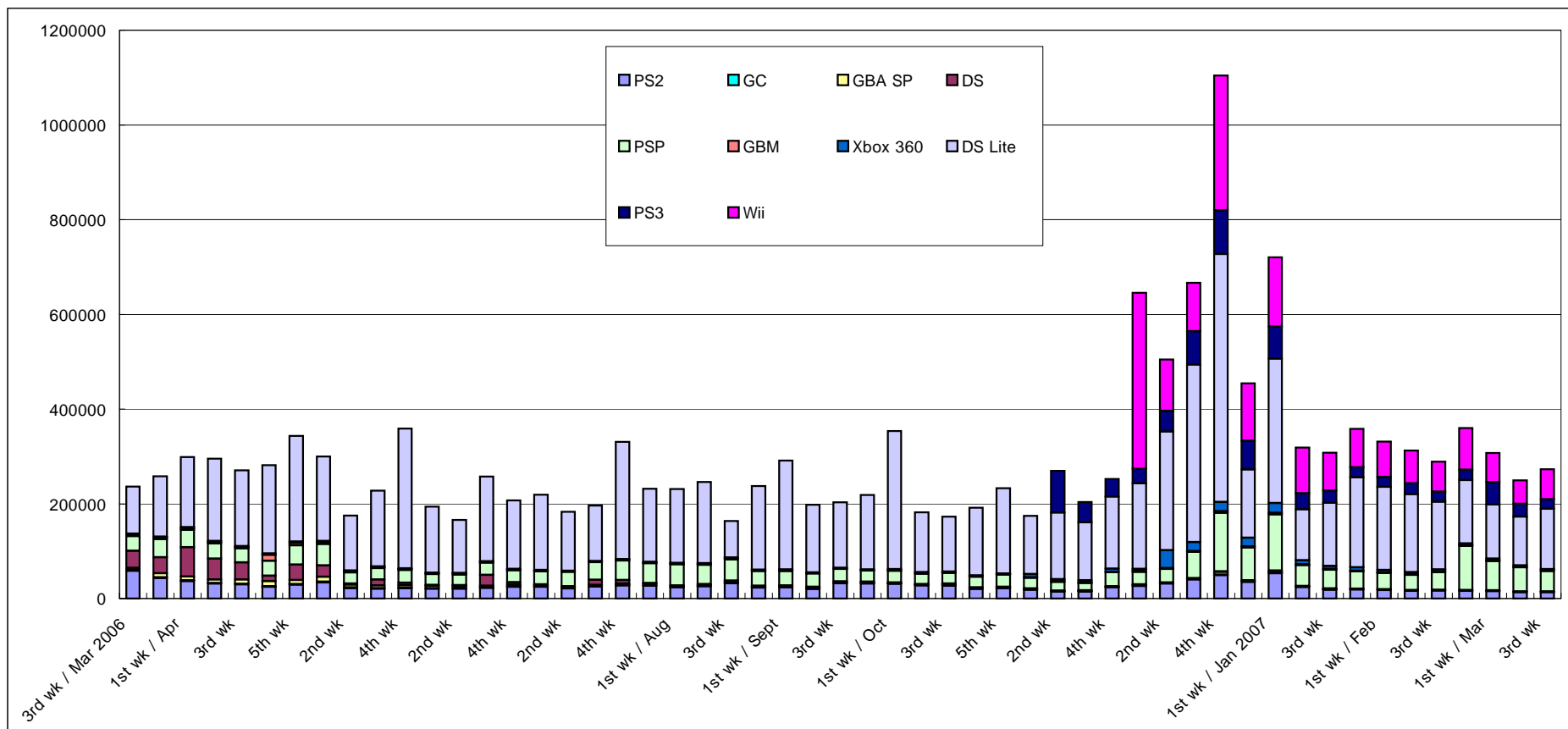
## Other New Titles

Platform	Title	Publisher	Sales Date	Price (incl. tax)	Genre	Copies Sold/wk (Estimated)	Sales- Stock Ratio	Copies Shipped (Estimated)	Copies in Stock
DS	Theme Park DS	Electronic Arts	03-15-07	\ 4,980	Sim	7,331	37.8%	19,403	12.1K
PS2	Shijo Saikyo no Deshi Kenichi: Gekito! Ragnarok Hachikengo	CAPCOM	03-15-07	\ 7,140	Act	6,419	54.0%	11,886	5.5K
Wii	G1 Jockey Wii	KOEI	03-15-07	\ 6,090	Act	5,911	32.8%	18,044	12.1K
DS	KuruKuru Princess: Figure de KiraKira Kori no Angel	Spike	03-15-07	\ 5,040	Act	5,704	30.9%	18,439	12.7K
DS	Konami Arcade Collection Konami Classics Series: Arcade Hits	KONAMI	03-15-07	\ 4,179	Act	4,636	37.0%	12,540	7.9K
DS	Kaseki Cho - Shinka Spectrobes Spectrobes	Walt Disney Japan	03-15-07	\ 5,040	Act/RPG	3,684	34.1%	10,803	7.1K
PS2	Sengoku Basara 2 [CapColle]	CAPCOM	03-15-07	\ 3,129	Act	2,910	22.3%	13,059	10.1K
PS2	Garo -den: Breakblow Fist or Twist	ESP	03-15-07	\ 7,140	Act	2,829	36.2%	7,823	5.K
PS3	Fight Night Round 3	Electronic Arts	03-15-07	\ 7,329	Act	2,198	32.5%	6,763	4.6K
DS	Tottoko Hamtaro: Hi! Ham -chans no Ham -Ham Challenge! Atsumare Hi!	Marvelous Interactive	03-15-07	\ 5,040	Other	2,049	18.9%	10,839	8.8K
DS	SpongeBob to Nakama-tachi Nicktoons: Battle for Volcano Island	THQ Japan	03-15-07	\ 5,040	Act/Adv	1,983	36.1%	5,491	3.5K
XB360	Battlefield 2: Modern Combat [Xbox 360 Platinum Collection]	Electronic Arts	03-15-07	\ 2,940	Act/Sht	1,724	50.2%	3,436	1.7K
PS2	Guilty Gear XX Slash [Sega the Best]	SEGA	03-15-07	\ 2,625	Act	1,036	27.6%	3,756	2.7K
Wii	SpongeBob SpongeBob SquarePants: Creature from the Krusty Krab	THQ Japan	03-15-07	\ 6,090	Act/Adv	1,030	16.8%	6,120	5.1K
DS	KuruPoto	STARFISH-SD	03-15-07	\ 2,940	Pzl	862	25.7%	3,350	2.5K

PS2	Saru Get You: Million Monkeys [PlayStation 2 the Best] Ape Escape: Million Monkeys	SCEJ (SONY)	03-15-07	\ 2,800	Act	718	14.2%	5,041	4.3K
PS2	Tenkabito [Sega the Best]	SEGA	03-15-07	\ 2,625	Sim/RPG	713	35.3%	2,021	1.3K
XB360	Chromehounds [Xbox 360 Platinum Collection]	SEGA	03-15-07	\ 2,940	Act	660	33.9%	1,946	1.3K
XB360	Burnout Revenge [Xbox 360 Platinum Collection]	Electronic Arts	03-15-07	\ 2,940	Act	604	36.1%	1,672	1.1K
PS2	Tiger Woods PGA Tour 07	Electronic Arts	03-15-07	\ 7,140	Act	594	19.2%	3,090	2.5K

# Hardware Sales/Share

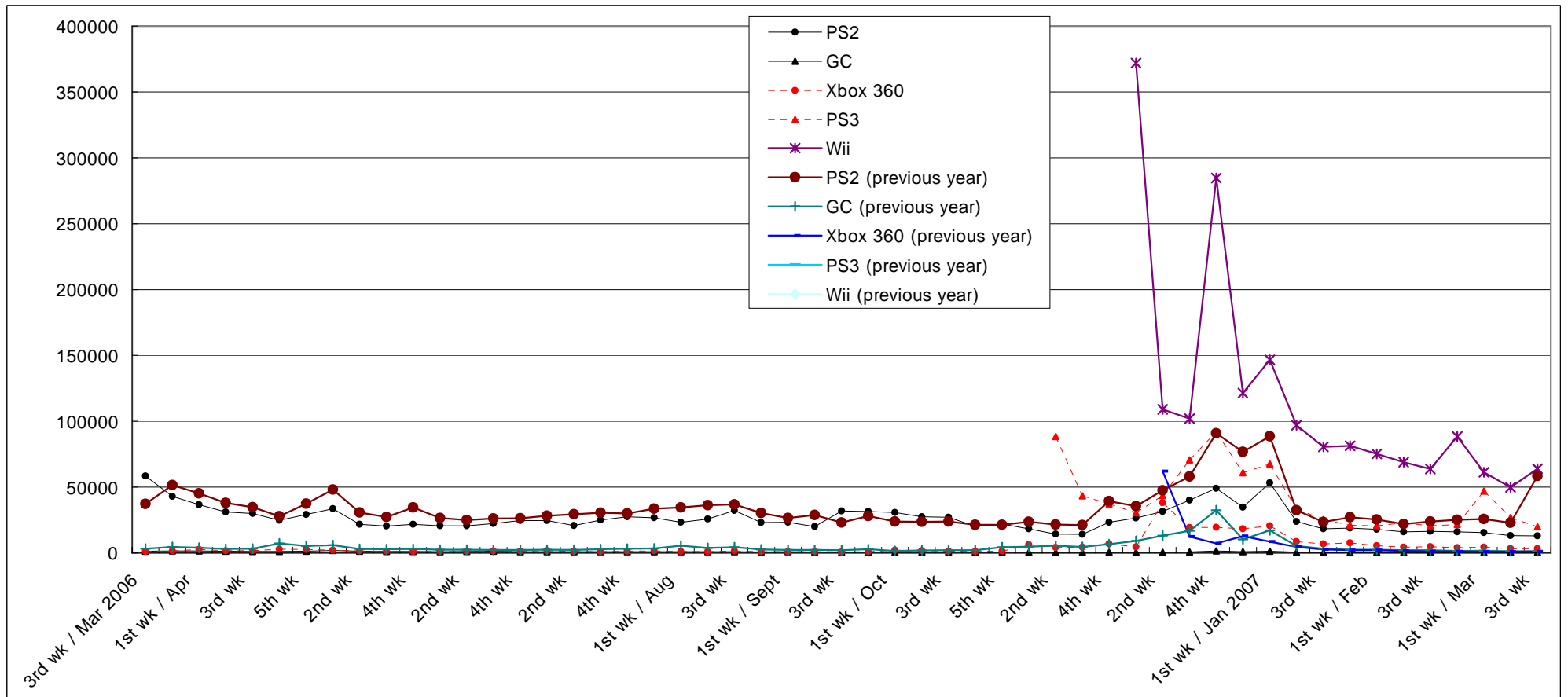
	1/22-1/28		1/29-2/4		2/5-2/11		2/12-2/18		2/19-2/25		2/26-3/4		3/5-3/11		3/12-3/18		2007 to Date
	Units Sold	Share	Units Sold	Share	Units Sold	Share	Units Sold	Share	Units Sold	Share	Units Sold	Share	Units Sold	Share	Units Sold	Share	
PS2	18,826	5.3%	17,877	5.4%	16,083	5.1%	16,513	5.7%	15,966	4.4%	15,389	5.0%	13,221	5.3%	12,901	4.7%	222,212
GC	283	0.1%	369	0.1%	416	0.1%	414	0.1%	295	0.1%	319	0.1%	321	0.1%	305	0.1%	5,142
GBA SP	1,101	0.3%	919	0.3%	708	0.2%	667	0.2%	789	0.2%	711	0.2%	753	0.3%	1,003	0.4%	13,168
DS	424	0.1%	439	0.1%	608	0.2%	457	0.2%	538	0.1%	625	0.2%	457	0.2%	629	0.2%	5,901
PSP	36,354	10.1%	34,005	10.3%	32,142	10.3%	37,202	12.9%	93,523	26.0%	61,858	20.1%	50,970	20.4%	42,762	15.7%	591,175
GBM	1,201	0.3%	1,159	0.3%	1,208	0.4%	1,028	0.4%	877	0.2%	1,041	0.3%	803	0.3%	798	0.3%	14,948
Xbox 360	7,639	2.1%	5,509	1.7%	4,380	1.4%	4,678	1.6%	4,062	1.1%	4,361	1.4%	3,240	1.3%	3,227	1.2%	73,157
DS Lite	190,116	53.1%	175,440	52.9%	164,850	52.8%	143,603	49.7%	134,088	37.2%	114,435	37.3%	103,089	41.3%	127,882	46.8%	1,699,045
PS3	21,028	5.9%	20,687	6.2%	22,950	7.3%	20,617	7.1%	21,558	6.0%	46,924	15.3%	26,925	10.8%	19,787	7.2%	326,967
Wii	81,381	22.7%	75,173	22.7%	68,978	22.1%	63,849	22.1%	88,338	24.5%	61,359	20.0%	49,750	19.9%	63,941	23.4%	876,811
<b>Total</b>	<b>358,353</b>	<b>100.0%</b>	<b>331,577</b>	<b>100.0%</b>	<b>312,323</b>	<b>100.0%</b>	<b>289,028</b>	<b>100.0%</b>	<b>360,034</b>	<b>100.0%</b>	<b>307,022</b>	<b>100.0%</b>	<b>249,529</b>	<b>100.0%</b>	<b>273,235</b>	<b>100.0%</b>	



## Comparison of Weekly Sales of PS2, GC, Xbox 360, PS3, and Wii

Units Sold	1st wk / Dec	2nd wk	3rd wk	4th wk	5th wk	1st wk / Jan 2007	2nd wk	3rd wk	4th wk	1st wk / Feb	2nd wk	3rd wk	4th wk	1st wk / Mar	2nd wk	3rd wk
PS2	26,488	31,468	40,092	49,129	34,715	53,299	23,815	18,322	18,826	17,877	16,083	16,513	15,966	15,389	13,221	12,901
GC	599	608	747	1,449	909	1,357	657	406	283	369	416	414	295	319	321	305
Xbox 360	4,607	38,096	19,211	19,511	18,373	20,586	8,666	6,809	7,639	5,509	4,380	4,678	4,062	4,361	3,240	3,227
PS3	30,467	43,597	70,557	92,122	60,891	67,620	33,492	25,379	21,028	20,687	22,950	20,617	21,558	46,924	26,925	19,787
Wii	371,936	109,068	101,956	284,648	121,510	146,553	96,975	80,514	81,381	75,173	68,978	63,849	88,338	61,359	49,750	63,941

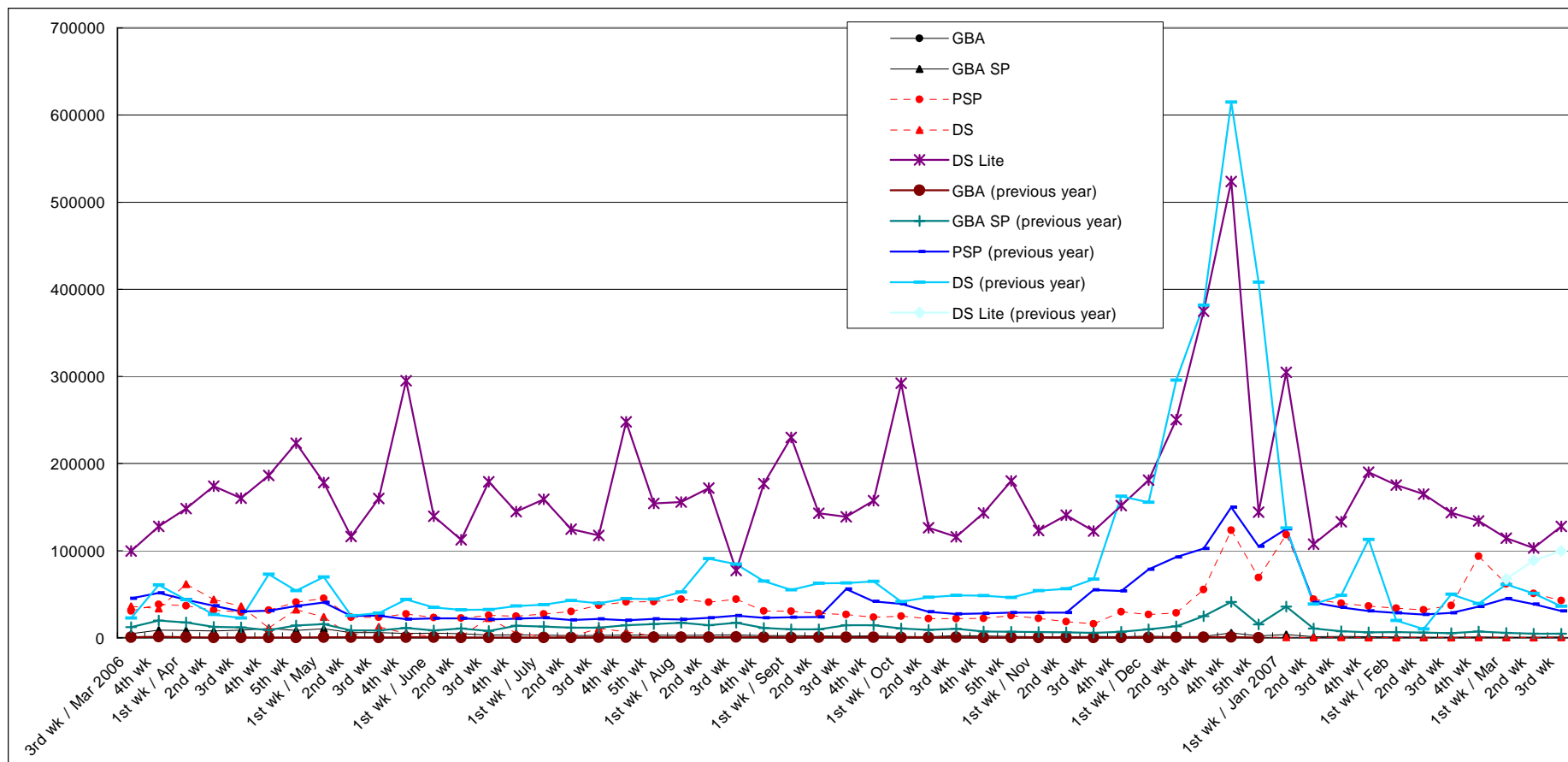
PS2 (previous year)	35,542	47,475	58,067	90,828	76,801	88,680	32,514	23,427	27,023	25,434	21,869	23,956	25,295	25,722	22,820	58,502
GC (previous year)	9,074	13,217	16,760	32,422	10,380	17,227	5,356	3,178	2,518	2,427	2,014	2,036	1,508	1,632	1,311	1,353
Xbox 360 (previous year)		62,135	12,320	7,315	12,755	8,655	4,620	2,762	2,095	2,022	1,463	1,212	1,082	1,020	1,035	1,181
PS3 (previous year)																
Wii (previous year)																



## Comparison of Weekly Sales of GBA, GBA SP, PSP, DS and DS Lite

Units Sold	1st wk / Dec	2nd wk	3rd wk	4th wk	5th wk	1st wk / Jan 2007	2nd wk	3rd wk	4th wk	1st wk / Feb	2nd wk	3rd wk	4th wk	1st wk / Mar	2nd wk	3rd wk
GBA																
GBA SP	1,820	1,212	1,511	5,711	2,234	3,833	1,228	1,456	1,101	919	708	667	789	711	753	1,003
PSP	26,605	28,536	55,382	123,524	68,981	118,479	44,173	39,707	36,354	34,005	32,142	37,202	93,523	61,858	50,970	42,762
DS	675	650	779	1,188	695	629	389	706	424	439	608	457	538	625	457	629
DS Lite	180,821	250,362	374,689	523,794	144,251	304,692	107,503	133,347	190,116	175,440	164,850	143,603	134,088	114,435	103,089	127,882

GBA (previous year)	414	581	673	1,001	0											
GBA SP (previous year)	9,665	13,062	24,734	41,036	15,272	35,951	10,658	7,430	6,228	6,539	5,869	5,191	7,334	5,652	4,622	4,725
PSP (previous year)	78,635	92,835	102,555	149,825	104,922	125,095	40,425	34,820	30,815	28,665	26,549	28,595	35,865	45,008	38,607	30,766
DS (previous year)	155,494	295,701	381,776	614,748	408,195	125,957	38,524	48,564	112,938	19,644	10,196	50,107	39,373	61,391	50,860	36,051
DS Lite (previous year)														67,653	88,958	99,740

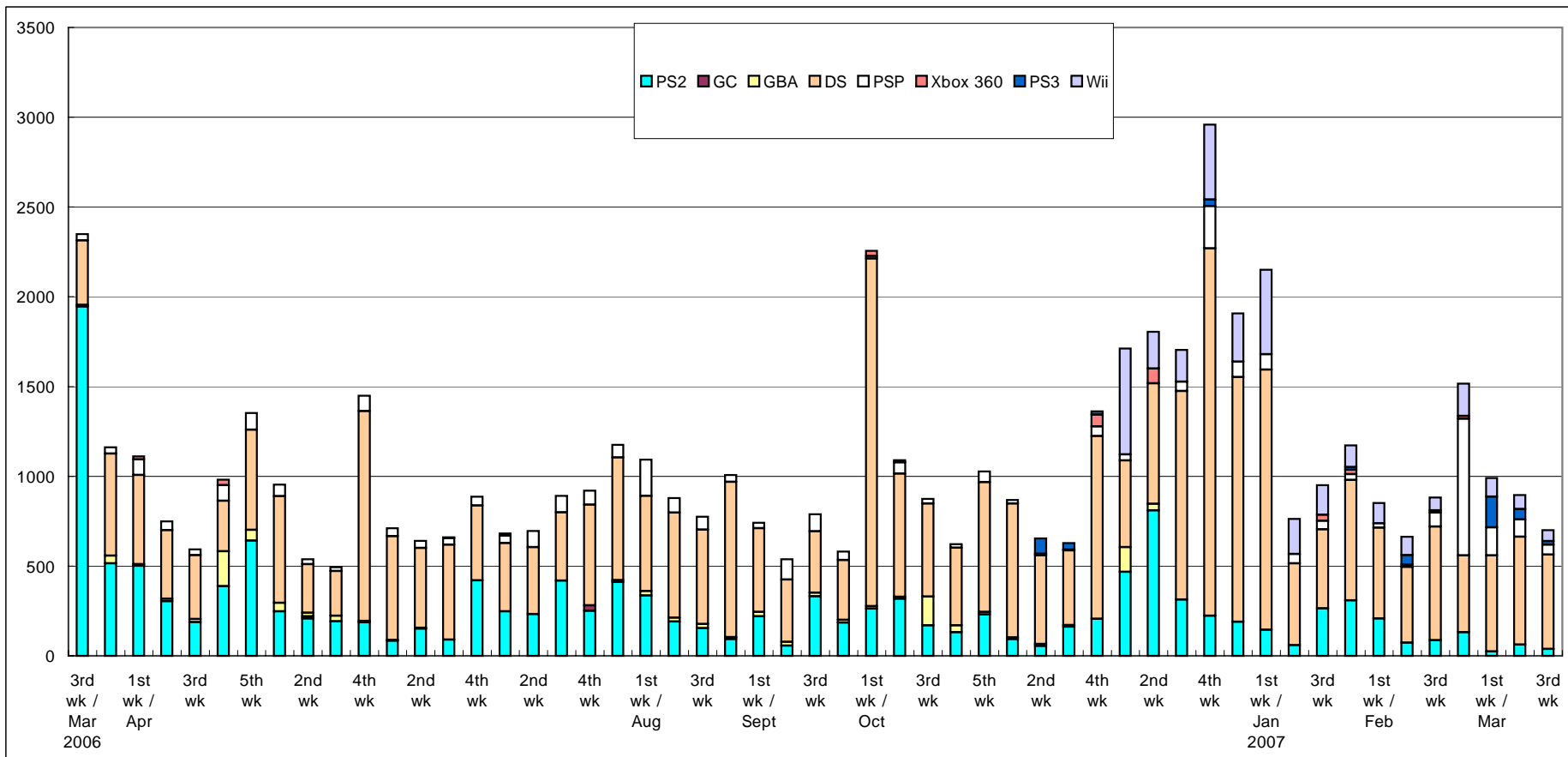




# Software Sales/Share for Each Platform

\*Only covering titles ranked in the TOP 30

Unit: K = 1000	1/22-1/28		1/29-2/4		2/5-2/11		2/12-2/18		2/19-2/25		2/26-3/4		3/5-3/11		3/12-3/18		2007 to Date
	Copies Sold	Share	Copies Sold	Share	Copies Sold	Share	Copies Sold	Share	Copies Sold	Share	Copies Sold	Share	Copies Sold	Share	Copies Sold	Share	
PS2	309.2	26.4%	208.1	24.5%	73.8	11.1%	86.6	9.8%	131.0	8.6%	23.7	2.4%	62.1	6.9%	37.7	5.4%	1,401.8
GC	0.0	0.0%	0.0	0.0%	0.0	0.0%	0.0	0.0%	0.0	0.0%	0.0	0.0%	0.0	0.0%	0.0	0.0%	0.0
GBA	0.0	0.0%	0.0	0.0%	0.0	0.0%	0.0	0.0%	0.0	0.0%	0.0	0.0%	0.0	0.0%	0.0	0.0%	0.0
DS	670.1	57.1%	506.2	59.5%	421.9	63.7%	633.9	71.8%	428.1	28.2%	535.3	54.1%	601.9	67.2%	525.8	75.2%	6,668.0
PSP	32.1	2.7%	23.8	2.8%	12.1	1.8%	76.6	8.7%	761.2	50.2%	156.7	15.8%	95.2	10.6%	55.6	7.9%	1,399.0
Xbox 360	25.0	2.1%	0.0	0.0%	0.0	0.0%	0.0	0.0%	15.3	1.0%	0.0	0.0%	0.0	0.0%	0.0	0.0%	74.1
PS3	14.4	1.2%	0.0	0.0%	52.4	7.9%	13.4	1.5%	0.0	0.0%	171.0	17.3%	58.6	6.5%	19.2	2.7%	329.2
Wii	122.2	10.4%	112.8	13.3%	102.4	15.5%	71.9	8.1%	180.5	11.9%	103.4	10.4%	78.2	8.7%	61.1	8.7%	1,662.1
<b>Total</b>	<b>1,173.0</b>	<b>100.0%</b>	<b>850.9</b>	<b>100.0%</b>	<b>662.7</b>	<b>100.0%</b>	<b>882.4</b>	<b>100.0%</b>	<b>1,516.1</b>	<b>100.0%</b>	<b>990.1</b>	<b>100.0%</b>	<b>896.0</b>	<b>100.0%</b>	<b>699.5</b>	<b>100.0%</b>	



## Market Scale Transition

Unit: 100 million yen	1st wk / Dec	2nd wk	3rd wk	4th wk	5th wk	1st wk / Jan 2007	2nd wk	3rd wk	4th wk	1st wk / Feb	2nd wk	3rd wk	4th wk	1st wk / Mar	2nd wk	3rd wk	2007 to Date
Hardware	138.4	107.3	140.8	233.0	106.6	153.5	71.4	64.9	70.9	65.8	63.0	58.4	74.4	72.4	54.2	55.7	804.6
Software	105.2	120.6	123.7	205.9	128.2	149.3	58.2	70.6	89.8	63.8	52.3	62.0	103.9	72.2	62.8	51.9	836.7
Total	243.6	227.9	264.5	438.9	234.9	302.7	129.5	135.5	160.7	129.6	115.3	120.4	178.3	144.6	117.0	107.6	1,641.3

Hardware (previous year)	50.5	98.2	98.6	147.5	102.2	72.2	24.6	21.6	29.5	15.9	13.1	19.2	19.7	34.9	34.6	40.5	
Software (previous year)	70.2	103.1	120.1	228.7	130.8	115.1	51.5	44.6	98.6	52.7	38.9	58.5	81.2	74.9	43.9	184.2	
Total (previous year)	120.7	201.3	218.6	376.1	233.0	187.3	76.1	66.3	128.1	68.6	52.0	77.7	100.9	109.9	78.6	224.6	

