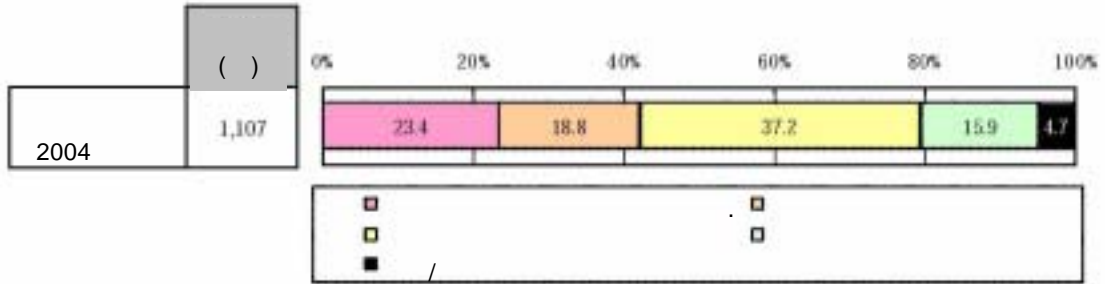


1.



Year	Total	Category 1 (%)	Category 2 (%)	Category 3 (%)	Category 4 (%)	Category 5 (%)
2004/	1,107	23.4	18.8	37.2	15.9	4.7
	844	26.4	19.4	33.6	15.9	4.6
10~12	78	15.4	19.2	32.1	23.1	10.3
13~15	98	27.6	13.3	32.7	14.3	12.2
16~18	129	28.7	23.3	34.1	11.6	2.3
19~24	210	30.0	22.9	30.5	13.8	2.9
25~29	141	32.6	19.9	29.8	13.5	4.3
30~39	130	20.0	14.6	46.2	17.7	1.5
40~49	58	20.7	19.0	29.3	27.6	3.4
	263	13.7	16.7	48.7	16.0	4.9
10~12	32	12.5	15.6	43.8	21.9	6.3
13~15	21	14.3	23.8	52.4	4.8	4.8
16~18	25	4.0	20.0	72.0	4.0	0.0
19~24	62	17.7	14.5	50.0	11.3	6.5
25~29	40	15.0	15.0	47.5	15.0	7.5
30~39	54	16.7	16.7	40.7	22.2	3.7
40~49	29	6.9	17.2	44.8	27.6	3.4
	355	38.0	16.6	28.2	11.5	5.6
	433	20.6	19.2	40.6	15.7	3.9
	319	11.0	20.7	42.6	21.0	4.7

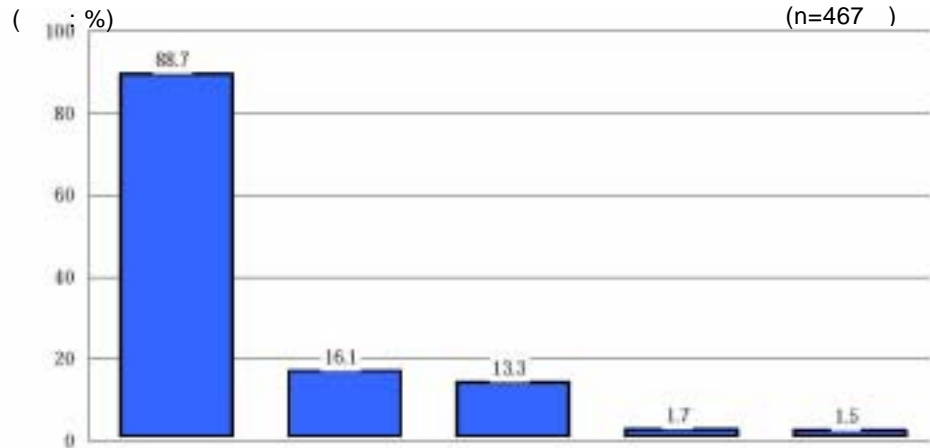
(: %)

가 , 40% 가 가 가

2-1.

【 】 《 》

: ,



		가 ()	가 (/)	가 (/)	가 (/)	가 (/)	
2004/		467	88.7	16.1	13.3	1.7	1.5
		387	89.4	16.3	14.7	0.8	1.8
	10~12	27	77.8	25.9	3.7	0.0	11.1
	13~15	40	95.0	20.0	20.0	0.0	0.0
	16~18	67	94.0	17.9	14.9	0.0	0.0
	19~24	111	94.6	13.5	13.5	0.9	0.9
	25~29	74	87.8	8.1	21.6	0.0	1.4
	30~39	45	86.7	20.0	11.1	2.2	2.2
	40~49	23	65.2	26.1	8.7	4.3	4.3
		80	85.0	15.0	6.3	6.3	0.0
	10~12	9	77.8	11.1	11.1	22.2	0.0
	13~15	8	100.0	12.5	0.0	0.0	0.0
	16~18	6	83.3	33.3	0.0	0.0	0.0
	19~24	20	80.0	20.0	5.0	5.0	0.0
	25~29	12	91.7	8.3	0.0	8.3	0.0
	30~39	18	88.9	16.7	5.6	0.0	0.0
	40~49	7	71.4	0.0	28.6	14.3	0.0
		194	94.3	12.9	14.9	0.5	1.0
		172	87.2	19.8	13.4	1.2	1.2
		101	80.2	15.8	9.9	5.0	3.0

가 88.7% (: %)

가 가 가

가 가 가

가 가

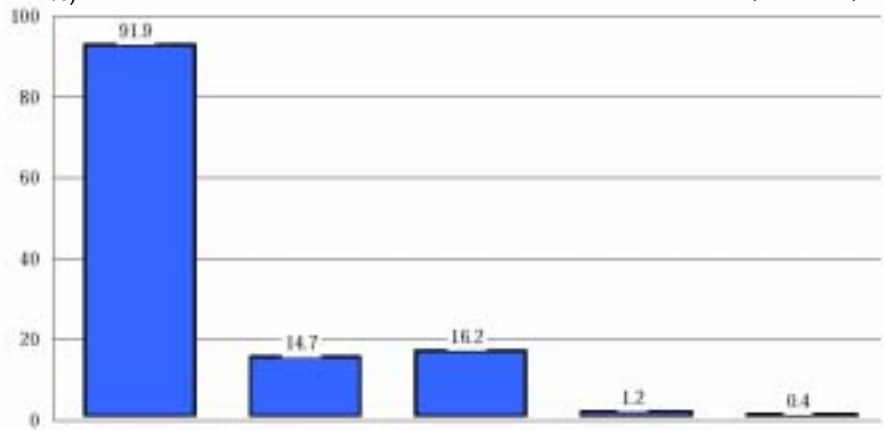
가

2-2.

【 】 《 》

： ，

(: %) (n=259)



	가 ()	가 (/)	가 (/)	가 (/)	가 (/)	가 (/)
2004/	259	91.9	14.7	16.2	1.2	0.4
	223	92.4	15.2	17.5	0.9	0.4
10~12	12	91.7	33.3	0.0	0.0	0.0
13~15	27	100.0	11.1	22.2	0.0	0.0
16~18	37	100.0	13.5	13.5	0.0	0.0
19~24	63	96.8	14.3	14.3	1.6	0.0
25~29	46	87.0	8.7	28.3	0.0	0.0
30~39	26	80.8	26.9	15.4	0.0	3.8
40~49	12	75.0	16.7	16.7	8.3	0.0
	36	88.9	11.1	8.3	2.8	0.0
10~12	4	75.0	0.0	25.0	0.0	0.0
13~15	3	100.0	0.0	0.0	0.0	0.0
16~18	1	100.0	0.0	0.0	0.0	0.0
19~24	11	90.9	18.2	0.0	0.0	0.0
25~29	6	83.3	16.7	0.0	16.7	0.0
30~39	9	88.9	11.1	11.1	0.0	0.0
40~49	2	100.0	0.0	50.0	0.0	0.0
	135	97.8	10.4	16.3	0.0	0.0
	89	85.4	21.3	14.6	2.2	0.0
	35	85.7	14.3	20.0	2.9	2.9

(: %)

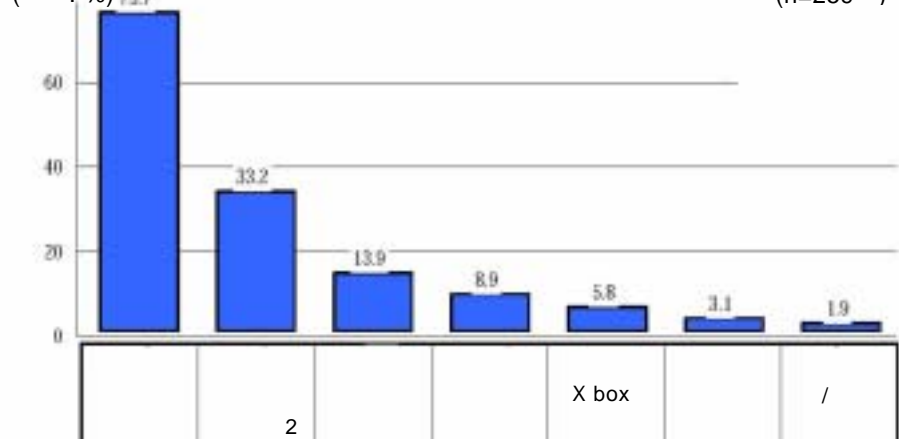
가 가
 90% 가
 가 97.8%

3-2.

【 】 < >

： ， .

(: %) (n=259)



2004/	()							
	259	75.7	33.2	13.9	8.9	5.8	3.1	1.9
	223	76.7	34.1	14.3	8.1	5.8	3.6	1.8
10~12	12	50.0	50.0	16.7	41.7	0.0	0.0	0.0
13~15	27	81.5	37.0	3.7	3.7	7.4	0.0	0.0
16~18	37	78.4	27.0	8.1	0.0	5.4	0.0	0.0
19~24	63	82.5	34.9	12.7	4.8	6.3	4.8	0.0
25~29	46	69.6	34.8	17.4	10.9	8.7	6.5	4.3
30~39	26	84.6	30.8	34.6	11.5	3.8	7.7	7.7
40~49	12	66.7	33.3	8.3	8.3	0.0	0.0	0.0
	36	69.4	27.8	11.1	13.9	5.6	0.0	2.8
10~12	4	75.0	0.0	0.0	25.0	0.0	0.0	0.0
13~15	3	100.0	33.3	0.0	0.0	0.0	0.0	0.0
16~18	1	0.0	0.0	0.0	100.0	0.0	0.0	0.0
19~24	11	72.7	27.3	9.1	0.0	9.1	0.0	0.0
25~29	6	33.3	33.3	16.7	0.0	16.7	0.0	16.7
30~39	9	77.8	33.3	22.2	33.3	0.0	0.0	0.0
40~49	2	100.0	50.0	0.0	0.0	0.0	0.0	0.0
	135	78.5	33.3	17.0	9.6	5.2	1.5	1.5
	89	71.9	38.2	7.9	5.6	5.6	5.6	0.0
	35	74.3	20.0	17.1	14.3	8.6	2.9	8.6

(: %)

· MMORG가 가

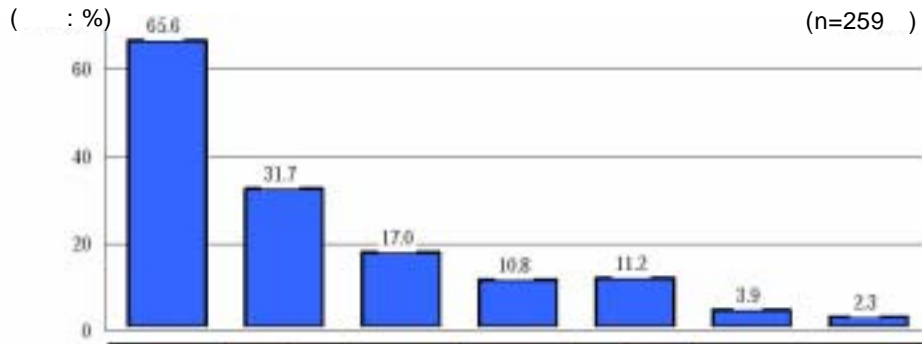
· 가

FPS

4-2.

【 】 < >

: , .



		()							
2004/		259	65.6	31.7	17.0	10.8	11.2	3.9	2.3
		223	65.9	33.6	16.6	11.2	11.7	4.0	2.2
	10~12	12	41.7	33.3	25.0	16.7	16.7	0.0	8.3
	13~15	27	51.9	48.1	29.6	11.1	18.5	0.0	3.7
	16~18	37	70.3	35.1	27.0	8.1	16.2	0.0	0.0
	19~24	63	79.4	27.0	9.5	7.9	7.9	4.8	0.0
	25~29	46	69.6	30.4	2.2	10.9	13.0	8.7	0.0
	30~39	26	65.4	38.5	19.2	15.4	3.8	7.7	3.8
	40~49	12	25.0	33.3	33.3	25.0	8.3	0.0	16.7
		36	63.9	19.4	19.4	8.3	8.3	2.8	2.8
	10~12	4	50.0	25.0	50.0	0.0	0.0	0.0	0.0
	13~15	3	66.7	33.3	33.3	33.3	0.0	0.0	0.0
	16~18	1	100.0	0.0	0.0	0.0	0.0	0.0	0.0
	19~24	11	54.5	27.3	9.1	0.0	9.1	9.1	0.0
	25~29	6	66.7	16.7	16.7	16.7	16.7	0.0	0.0
	30~39	9	77.8	11.1	11.1	11.1	0.0	0.0	11.1
	40~49	2	50.0	0.0	50.0	0.0	50.0	0.0	0.0
		135	70.4	32.6	15.6	10.4	10.4	3.7	2.2
		89	60.7	31.5	15.7	11.2	13.5	4.5	2.2
		35	60.0	28.6	25.7	11.4	8.6	2.9	2.9

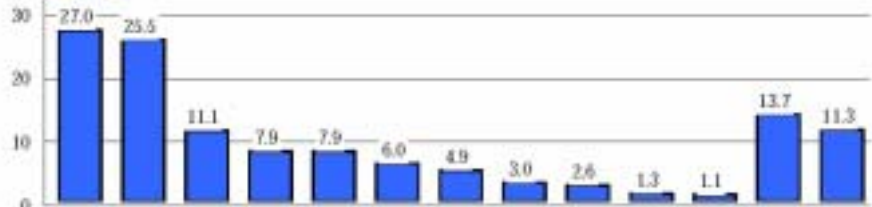
(: %)

5-1.

【 】 《 》

： ，

(: %) (n=467)



2004/	467	27.0	25.5	11.1	7.9	7.9	6.0	4.9	3.0	2.6	1.3	1.1	13.7	11.3
	387	29.5	26.9	11.4	7.8	8.5	6.2	4.4	3.4	2.8	1.6	1.3	11.4	9.8
10~12	27	11.1	7.4	3.7	3.7	14.8	0.0	3.7	0.0	0.0	3.7	0.0	33.3	29.6
13~15	40	27.5	10.0	5.0	5.0	10.0	0.0	7.5	7.5	0.0	0.0	0.0	35.0	12.5
16~18	67	37.3	10.4	6.0	11.9	11.9	6.0	7.5	3.0	1.5	3.0	1.5	16.4	7.5
19~24	111	37.8	19.8	10.8	9.0	4.5	9.9	3.6	0.9	8.1	0.0	0.0	8.1	11.7
25~29	74	21.6	52.7	14.9	5.4	5.4	8.1	4.1	5.4	0.0	2.7	2.7	1.4	4.1
30~39	45	31.1	48.9	15.6	11.1	11.1	4.4	0.0	4.4	0.0	2.2	2.2	0.0	4.4
40~49	23	13.0	34.8	30.4	0.0	13.0	4.3	4.3	4.3	4.3	0.0	4.3	0.0	8.7
	80	15.0	18.8	10.0	8.8	5.0	5.0	7.5	1.3	1.3	0.0	0.0	25.0	18.8
10~12	9	11.1	22.2	0.0	11.1	11.1	0.0	0.0	0.0	0.0	0.0	0.0	55.6	0.0
13~15	8	25.0	0.0	0.0	0.0	0.0	12.5	12.5	0.0	0.0	0.0	0.0	25.0	25.0
16~18	6	16.7	0.0	0.0	16.7	33.3	0.0	0.0	0.0	0.0	0.0	0.0	50.0	0.0
19~24	20	25.0	15.0	5.0	15.0	5.0	5.0	0.0	5.0	5.0	0.0	0.0	15.0	25.0
25~29	12	8.3	25.0	25.0	8.3	0.0	8.3	8.3	0.0	0.0	0.0	0.0	8.3	25.0
30~39	18	11.1	33.3	11.1	5.6	0.0	5.6	22.2	0.0	0.0	0.0	0.0	22.2	16.7
40~49	7	0.0	14.3	28.6	0.0	0.0	0.0	0.0	0.0	0.0	0.0	0.0	28.6	28.6
	194	32.5	28.4	10.3	9.3	6.2	4.1	5.7	2.1	1.0	1.5	1.0	17.0	8.2
	172	24.4	20.9	11.6	7.0	9.3	8.7	5.8	4.7	5.2	0.6	0.6	13.4	12.2
	101	20.8	27.7	11.9	6.9	8.9	5.0	2.0	2.0	1.0	2.0	2.0	7.9	15.8

(: %)

· 가 (,)
 · 25 가
 · 가
 · 18 30 가

. 「 , .」 가 가 . 가
가 , 가 , 가
,
.
. 가 / ,
.
.

7.

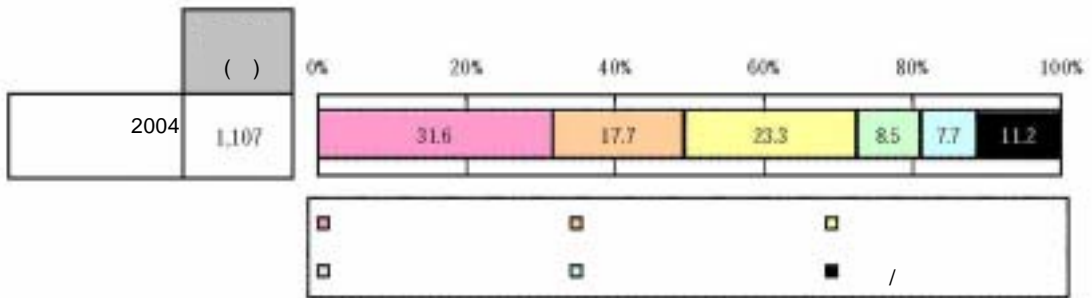


	()					/
2004	1,107	5.4	17.7	16.9	48.8	11.2
	844	5.7	17.4	18.1	47.6	11.1
10~12	78	9.0	6.4	10.3	51.3	23.1
13~15	98	6.1	28.6	10.2	40.8	14.3
16~18	129	7.8	22.5	17.1	45.0	7.8
19~24	210	5.2	17.6	18.1	48.6	10.5
25~29	141	3.5	14.9	25.5	49.6	6.4
30~39	130	3.8	16.9	21.5	48.5	9.2
40~49	58	6.9	8.6	19.0	50.0	15.5
	203	4.6	18.6	12.9	52.5	11.4
10~12	32	9.4	15.6	12.5	53.1	9.4
13~15	21	4.8	23.8	14.3	47.6	9.5
16~18	25	0.0	12.0	20.0	68.0	0.0
19~24	62	4.8	16.1	11.3	54.8	12.9
25~29	40	5.0	25.0	12.5	37.5	20.0
30~39	54	3.7	18.5	14.8	53.7	9.3
40~49	29	3.4	20.7	6.9	55.2	13.8
	355	5.4	20.0	13.2	48.5	13.0
	433	6.5	17.6	19.6	46.4	9.9
	319	4.1	15.4	17.2	52.4	11.0

(: %)

가
가 23.1% 13~15
가

8-1.



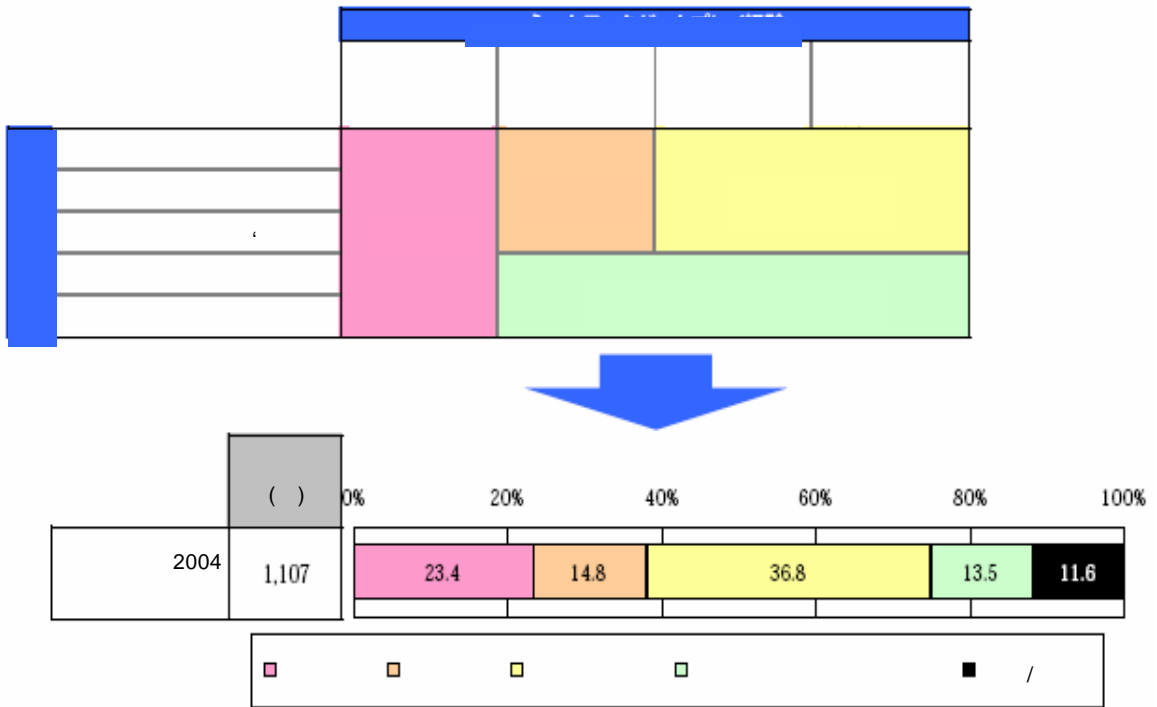
Year	Total	Category 1 (%)	Category 2 (%)	Category 3 (%)	Category 4 (%)	Category 5 (%)	Category 6 (%)
2004	1,107	31.6	17.7	23.3	8.5	7.7	11.2
	844	34.0	16.9	22.3	7.8	7.7	11.3
10~12	78	23.1	14.1	19.2	6.4	12.8	24.4
13~15	98	43.9	15.3	20.4	1.0	4.1	15.3
16~18	129	47.3	16.3	15.5	5.4	7.8	7.8
19~24	210	33.3	19.0	22.4	10.5	6.7	8.1
25~29	141	35.5	20.6	19.9	7.8	8.5	7.8
30~39	130	25.4	15.4	30.8	12.3	4.6	11.5
40~49	58	20.7	12.1	31.0	6.9	15.5	13.8
	263	24.0	20.2	26.6	10.6	7.6	11.0
10~12	32	37.5	18.8	18.8	9.4	6.3	9.4
13~15	21	38.1	19.0	28.6	4.8	4.8	4.8
16~18	25	24.0	40.0	24.0	8.0	0.0	4.0
19~24	62	32.3	19.4	19.4	11.3	4.8	12.9
25~29	40	15.0	15.0	27.5	12.5	7.5	22.5
30~39	54	14.8	16.7	31.5	13.0	13.0	11.1
40~49	29	10.3	20.7	41.4	10.3	13.8	3.4
	355	45.1	14.1	17.5	4.2	5.6	13.5
	433	28.9	23.1	23.1	8.1	7.6	9.2
	319	20.4	14.4	30.1	13.8	10.0	11.3

(: %)

가 가 23.3% ,
가 가

8-2.

4

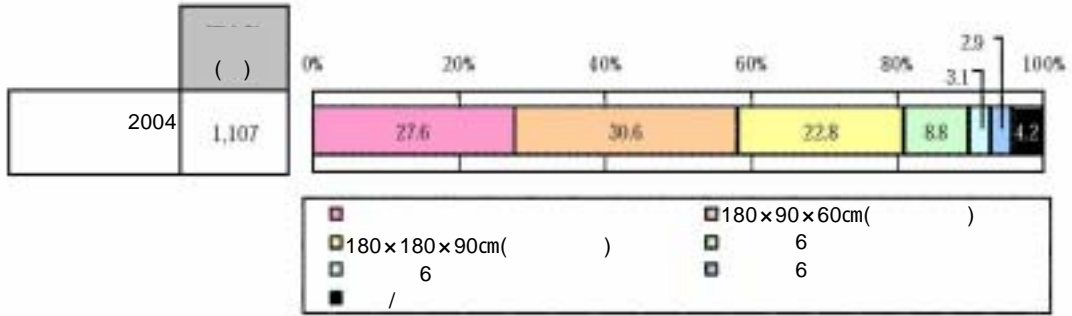


	()					/
2004	1,107	23.4	14.8	36.8	13.5	11.6
	844	26.4	15.2	34.2	12.7	11.5
10~12	78	15.4	11.5	30.8	14.1	28.2
13~15	98	27.6	13.3	39.8	4.1	15.3
16~18	129	28.7	17.8	35.7	9.3	8.5
19~24	210	30.0	18.1	30.5	13.8	7.6
25~29	141	32.6	17.0	27.7	14.2	8.5
30~39	130	20.0	10.0	45.4	14.6	10.0
40~49	58	20.7	13.8	31.0	20.7	13.8
	263	13.7	13.7	44.9	16.0	11.8
10~12	32	12.5	15.6	46.9	15.6	9.4
13~15	21	14.3	23.8	47.6	9.5	4.8
16~18	25	4.0	20.0	68.0	8.0	0.0
19~24	62	17.7	9.7	43.5	12.9	16.1
25~29	40	15.0	12.5	30.0	20.0	22.5
30~39	54	16.7	9.3	42.6	18.5	13.0
40~49	29	6.9	17.2	48.3	24.1	3.4
	355	38.0	14.4	28.7	8.5	10.4
	433	20.6	15.0	40.9	12.5	11.1
	319	11.0	15.0	40.1	20.4	13.5

(: %)

. 51.6%
 . 가 .
 . 16~18
 , 68% .
 . 가 가
 가 .

1.

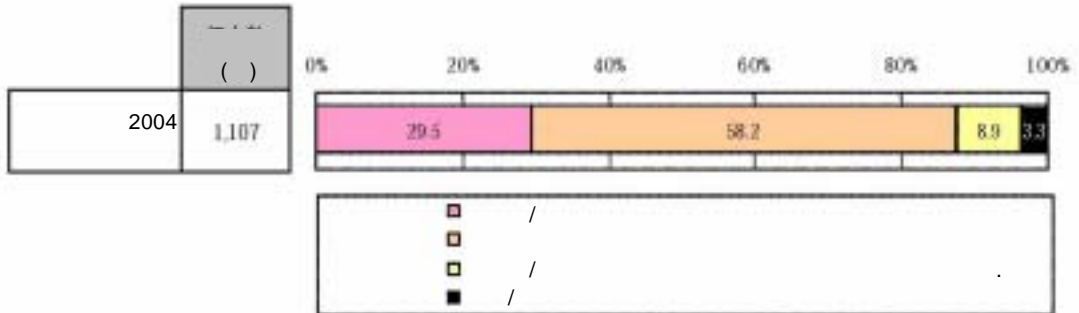


	()	180x90x60cm()	180x180x90cm()	6	6	6	/	
2004	1,107	27.6	30.6	22.8	8.8	3.1	2.9	4.2
	844	27.3	30.1	23.0	9.1	3.4	3.4	2.7
10~12	78	35.9	30.8	16.7	9.0	5.1	0.0	2.6
13~15	98	20.4	39.8	21.4	9.2	3.1	3.1	3.1
16~18	129	23.3	32.8	23.3	8.5	3.1	6.2	3.1
19~24	210	30.0	28.6	26.7	7.1	4.3	1.0	2.4
25~29	141	22.0	28.4	26.2	14.9	2.1	5.0	1.4
30~39	130	26.9	24.6	25.4	8.5	2.3	6.9	5.4
40~49	58	39.7	29.3	20.7	5.2	5.2	0.0	0.0
	263	28.9	32.3	19.0	7.6	1.9	1.1	9.1
10~12	32	43.8	21.9	6.3	6.3	9.4	3.1	9.4
13~15	21	14.3	38.1	23.8	4.8	4.8	0.0	14.3
16~18	25	8.0	52.0	20.0	12.0	0.0	0.0	8.0
19~24	62	30.6	30.6	24.2	8.1	0.0	1.6	4.8
25~29	40	30.0	30.0	20.0	10.0	0.0	2.5	7.5
30~39	54	29.6	33.3	14.8	9.3	1.9	0.0	11.1
40~49	29	34.5	27.6	24.1	0.0	0.0	0.0	13.8
	355	20.8	31.8	23.4	11.5	4.5	4.2	3.7
	433	26.8	31.6	25.9	8.1	2.8	1.8	3.0
	319	36.4	27.9	17.9	6.6	1.9	2.8	6.6

(: %)

· 180×90×60cm	가 가			
	60%가			
· 10~12	가	가 가		
· 6			2.9%	16~18
30~39				

2. /



2004	1,107	29.5	58.2	8.9	3.3
	844	29.1	58.3	9.8	2.7
10~12	78	34.6	61.5	2.6	1.3
13~15	98	37.8	58.2	3.1	1.0
16~18	129	41.1	52.7	3.1	3.1
19~24	210	25.2	61.9	10.0	2.9
25~29	141	24.8	56.0	16.3	2.8
30~39	130	18.5	58.5	17.7	5.4
40~49	58	29.3	58.6	12.1	0.0
	263	30.8	57.8	6.1	5.3
10~12	32	34.4	50.0	12.5	3.1
13~15	21	61.9	38.1	0.0	0.0
16~18	25	40.0	56.0	0.0	4.0
19~24	62	37.1	50.0	8.1	4.8
25~29	40	22.5	67.5	2.5	7.5
30~39	54	20.4	66.7	5.6	7.4
40~49	29	13.8	69.0	10.3	6.9
	355	41.1	53.0	4.2	1.7
	433	30.7	59.1	7.6	2.5
	319	15.0	62.7	16.0	6.3
	306	22.5	65.4	11.1	1.0
180< 90< 60m	339	28.9	64.0	6.8	0.3
180< 180< 90m	252	32.9	57.9	8.7	0.4
6	97	40.2	47.4	12.4	0.0
6	34	38.2	50.0	8.8	2.9
6	32	65.6	21.9	12.5	0.0
/	47	8.5	23.4	2.1	66.0

(: %)

· 60% 가 .
· 30%, 10%
· ,
· /
·